

Michigan Journal of Race and Law

Volume 5

1999

Expert Report of Kinley Larntz, PH.D.

Kinley Larntz
University of Minnesota

Follow this and additional works at: <https://repository.law.umich.edu/mjrl>



Part of the [Civil Rights and Discrimination Commons](#), [Education Law Commons](#), [Law and Race Commons](#), [Law and Society Commons](#), and the [Legal Education Commons](#)

Recommended Citation

Kinley Larntz, *Expert Report of Kinley Larntz, PH.D.*, 5 MICH. J. RACE & L. 463 (1999).
Available at: <https://repository.law.umich.edu/mjrl/vol5/iss1/21>

This Feature is brought to you for free and open access by the Journals at University of Michigan Law School Scholarship Repository. It has been accepted for inclusion in Michigan Journal of Race and Law by an authorized editor of University of Michigan Law School Scholarship Repository. For more information, please contact mlaw.repository@umich.edu.

EXPERT REPORT OF KINLEY LARNTZ, PH.D.†

concerning Barbara Grutter v. Lee Bollinger, et al

December 14, 1998

My area of expertise is applied statistics. I served as a member of the faculty in Applied Statistics at the University of Minnesota for the period 1971–1998. I am currently Professor Emeritus of Statistics at the University of Minnesota and work also as an independent consultant. My professional qualifications are set forth in the Academic Curriculum Vitae, which is attached as Exhibit B to this report.

I. OPINIONS AND THE BASIS AND REASONS THEREFOR.

In my work in this matter, I undertook the task of analyzing the statistical relationship between law school acceptance and ethnicity. In particular, I focus on the strength of the relationship between law school acceptance and being a member of certain ethnic groups, controlling for qualifications for admission such as undergraduate grade point average, Law School Admission Test score, and selection index, and for other factors such as residency in the State of Michigan, gender, and a measure of economic disadvantage, waiver of the fee for application.

A. Characteristics of applicants.

I performed statistical analyses comparing the characteristics of admission applicants by ethnicity. Data analyzed in this report were provided in electronic form by the University of Michigan. In the data provided, ethnicity of applicants was classified into 9 categories: (1) Native American, (2) African American, (3) Caucasian American, (4) Mexican American, (5) Other Hispanic American, (6) Asian/Pacific Island American, (7) Puerto Rican, (8) Foreign, and (9) Unknown Ethnicity. Table 1 gives the number of applications in each ethnic classification for the admissions years of 1995, 1996, 1997, and 1998. Table 2 reports the median undergraduate GPA by ethnic classification for applicants for each year. Note that for all four years, the median undergraduate GPAs for African American, Mexican American, and Puerto Rican

† In reprinting these reports, the *Michigan Journal of Race & Law* has not made any editorial changes whatsoever and has striven to match the original documents submitted to the court within the constraints of our publishing methods. Exhibit A has been reconstructed from original law school documents that were attached to the report filed with the court. Exhibit B has not been reproduced here.

applicants are considerably lower than the corresponding overall medians given in last line of the table. For Native Americans, median undergraduate GPA is lower than the overall median for all four years and is considerably lower for the first two years. The median undergraduate GPA for Caucasian American applicants is approximately 0.05 points higher than the overall median for each of the four years. Table 3 reports the median LSAT score by ethnic classification for applicants for each year. The pattern of LSAT scores is consistent across years and consistent with the patterns seen for undergraduate GPA. The median LSAT score for African American applicants is approximately 12 points lower than the overall median for each year. Native American, Mexican American, and Puerto Rican applicants have medians four to eight points lower than the corresponding overall medians for each year. Table 4 gives the percentage of applicants recorded as receiving a fee waiver by ethnic classification for each year. It is presumed that applicants who receive fee waivers are relatively economically disadvantaged compared to other applicants. Note that the highest percentages of fee waivers are recorded for African American, Mexican American, and Native American applicants. The lowest percentages are recorded for Caucasian Americans.

Based on Tables 1–4 and supporting statistical analyses attached to this report, I conclude that for Native American, African American, Mexican American, and Puerto Rican applicants, undergraduate GPA and LSAT scores are lower compared to other ethnic groups, in particular, compared to Caucasian American applicants.

B. Characteristics of accepted applicants

I performed statistical analyses comparing the characteristics of accepted applicants by ethnicity. Table 5 gives the median undergraduate GPA by ethnic classification for accepted applicants for each year. The entire distributions of the undergraduate GPAs for accepted applicants for 1995 are compared in Figure 1. Figure 1 is called a box plot. The bottom and top edges of the shaded boxes are drawn at the 25th and 75th percentiles of the distribution with the unshaded line in the middle of the box representing the median of the distribution. Note that 50 percent of a distribution is between the 25th and 75th percentiles, so the box displays the middle 50 percent of a distribution. A range of normal values beyond the 25th and 75th percentiles is indicated by the upper and lower brackets. Values outside the brackets are indicated by the horizontal lines. From the Figure 1, we can see that the four ethnic groups with the lowest median undergraduate GPAs are Native American (NA), African American (AA), Mexican American (MA), and Puerto Rican (PR) accepted applicants. Note also that the lower edges of the boxes

representing the 25th percentiles are the lowest for these four ethnic groups. The same holds for the upper edges of the boxes representing the 75th percentiles for GPAs of accepted applicants. Figures 2, 3, and 4 compare the undergraduate GPAs for 1996, 1997, and 1998, respectively. In general, the boxes are lowest for Native American, African American, Mexican American, and Puerto Rican accepted applicants.

Table 6 reports the median LSAT score by ethnic classification for accepted applicants for each year. Figures 5, 6, 7, and 8 display comparative box plots of the distributions of LSAT scores for ethnic groups for 1995, 1996, 1997, and 1998. The LSAT scores show considerable separation. Note that if two boxes fail to overlap at all, that means the 25th percentile of the distribution for the higher box is greater than the 75th percentile of the distribution for the lower box. Looking at Figure 5 comparing the LSAT scores for 1995 accepted applicants, we see that the boxes for Caucasian American (CA), Asian/Pacific Island (AP), and Unknown Ethnicity (Unk) accepted applicants are all at or above the boxes for Native American (NA), African American (AA), Mexican American (MA), and Puerto Rican (PR) accepted applicants. That means there is relatively little overlap in the LSAT scores for Caucasian American, Asian/Pacific Island, and Unknown Ethnicity accepted applicants with the LSAT scores for Native American, African American, Mexican American, and Puerto Rican accepted applicants. The same pattern of distribution separation is shown in the box plots for 1996, 1997, and 1998 given in Figures 6, 7, and 8, respectively.

Based on Tables 5–6 and Figures 1–8 and supporting statistical analyses attached to this report, I conclude that undergraduate GPA and LSAT scores are lower for Native American, African American, Mexican American, and Puerto Rican accepted applicants compared to other ethnic groups, in particular, Caucasian American accepted applicants.

C. Relationship of acceptance and ethnicity controlling for GPA and LSAT jointly.

It is clear that undergraduate GPA and LSAT scores are strong qualification variables for admission and that candidates with higher GPAs and higher LSAT scores have a greater chance of admission. In materials received from the University for 1995 admissions, a grid display reported the numbers of applicants, acceptances, and enrollments in each combination of 10 GPA categories and 12 LSAT categories. The data were presented for all applications and also broken down by ethnic classification, groups of ethnic classifications, Michigan residency status, and gender. A copy of the 1995 report is attached as Exhibit A. Identical information for 1996, 1997, and 1998 can be constructed from the

electronic database provided. The statistical supporting materials for this report contain breakdowns by ethnic classification, Michigan residency status, and gender for all four years.

In looking specifically at the Grid in Exhibit A, we can, for instance, find the ethnicity and admission decisions for applicants with GPAs in the range 3.25–3.49 and LSAT scores in the range 161–163 in the third row and tenth column of data. There were 198 applicants, 17 of whom were admitted and thus 181 of whom were denied. In percentage terms, the admission rate for this cell was 8.6%. In terms of odds, which are useful for statistical modeling, the reported odds for admission are 17 to 181 or $17/181 = 0.094$. For Native Americans in this cell, there were 2 applicants both of whom were admitted; for African Americans, there were 4 applicants with 4 admitted; for Caucasian Americans, there were 126 applicants with 5 admitted; for Mexican Americans, there was 1 applicant who was admitted; for Other Hispanic Americans, there were 7 applicants with 1 admitted; for Asian/Pacific Island Americans, there were 20 applicants with 2 admitted; there were no Puerto Rican applicants; there were 3 Foreign applicants with none admitted; and 35 applicants of Unknown Ethnicity with 2 of those admitted.

I performed statistical analyses using logistic regression to compare the grids of ethnic groups. As can be seen clearly from the grids, there is a strong effect of the combination of GPA and LSAT on odds of acceptance. For the most part, to be accepted an applicant must score well on both of these criteria. For that reason, the logistic regression model included terms for each GPA and LSAT combination. To study the effects of ethnic groups, indicator variables were added to the model for each ethnic group except Caucasian Americans who will serve as a comparison group. The main tool for comparison is the relative odds of acceptance for ethnic groups within the grid cells. That is, we statistically compare the odds of acceptance of one ethnic group to the odds of acceptance for another ethnic group for applicants in the same GPA-LSAT grid cell. If one ethnic group has a higher odds of acceptance compared to the odds of acceptance for the other group, then we can use the ratio of the odds (relative odds) to compare the advantage of one ethnic group to the other.

Table 7 gives the estimated relative odds (relative to Caucasian Americans) for the 9 ethnic groups for 1995. A relative odds near 1.0 indicates no particular advantage or disadvantage relative to Caucasian Americans for acceptance. Relative odds substantially greater than 1.0 indicate an advantage for acceptance for the particular ethnic group compared to Caucasian Americans. Relative odds substantially less than 1.0 indicate a disadvantage for acceptance for the particular ethnic group compared to Caucasian Americans. The relative odds is best thought of as

a multiplier that increases (if greater than 1.0) or decreases (if less than 1.0) the odds of acceptance for candidates belonging to the ethnic group in the same grid cell (i.e., the same combination of GPA and LSAT) compared to Caucasian Americans in the same grid cell. Also included in Table 7 is a statistical measure of the discrepancy of the estimated relative odds from the baseline value of 1.0 in terms of standard deviations. In statistical practice, discrepancies of 2 or 3 standard deviations or greater are termed statistically significant. Discrepancies larger than 2 or 3 standard deviations would indicate events that have a relatively small probability of occurring if chance alone were controlling the discrepancies. For instance, discrepancies as large as 3.29 occur only 1 time in 1,000 by chance; discrepancies as large as 4.42 occur only 1 time in 100,000 by chance; discrepancies larger than 4.89 occur less than 1 time in 1,000,000 by chance.

Looking at Table 7, four of the relative odds are highly statistically significant by the usual standards. The standard deviations associated with the relative odds of Native Americans, African Americans, Mexican Americans, and Puerto Ricans are all very large indicating that membership in these ethnic groups is a strong factor in the acceptance decision. The estimated relative odds gives us a direct measure of the strength of the particular ethnic group as a factor for acceptance. Native American applicants in the same grid cell as a Caucasian American applicant have estimated odds of acceptance 61.37 times greater than that of the Caucasian American applicant. African American applicants in the same grid cell as a Caucasian American applicant have estimated odds of acceptance 257.93 times greater than that of the Caucasian American applicant. Mexican American applicants in the same grid cell as a Caucasian American applicant have estimated odds of acceptance 81.90 times greater than that of the Caucasian American applicant. Puerto Rican applicants in the same grid cell as a Caucasian American applicant have estimated odds of acceptance 37.86 times greater than that of the Caucasian American applicant.

These estimated relative odds values are *extremely* large compared to those observed in usual statistical practice. Indeed, in my years of experience as an applied statistician, I do not recall any such extreme estimates in large data sets. (Such estimates do occasionally arise for small data sets, as there is not sufficient information to accurately estimate the relative odds. That is not the case here.) For perspective, attaining a relative odds of 2 or 3 for cure of a disease is often the goal of a medical study. That is, a drug that doubled or tripled the odds of cure would be of great value. Double and triple digit relative odds are simply enormous!

Table 8 reports the relative odds for ethnic groups controlling for the GPA x LSAT grid cell for 1996 acceptances. The same pattern of

highly statistically significant effects of ethnic group is seen in Table 8 as we just discussed for Table 7. For Native American, African American, Mexican American, and Puerto Rican applicants, the effect of ethnic group is highly statistically significant as indicated by standard deviation measures greater than 5.0. Again the estimated relative odds are extremely large, ranging from 29.81 for Native American applicants to 313.59 for African American applicants.

Table 9 reports the relative odds for ethnic groups controlling for the GPA x LSAT grid cell for 1997 acceptances. The patterns of highly statistically significant effects of ethnic groups for 1997 are identical to those seen in Tables 7 and 8 for 1995 and 1996. Again the estimated relative odds are extremely large, ranging from 17.55 for Mexican American applicants to 53.49 for African American applicants.

Table 10 reports the relative odds for ethnic groups controlling for the GPA x LSAT grid cell for 1998 acceptances. The patterns of highly statistically significant effects of ethnic groups for 1998 are identical to those seen in previous years with one additional group showing up as highly statistically significant. In 1998, Other Hispanic American applicants had a highly statistically significant relative odds of acceptance compared to Caucasian American applicants. The estimated relative odds of 7.48 is measured at 4.87 standard deviations from a neutral relative odds of 1.0. For the other four highly statistically significant ethnic groups, the estimated relative odds are again extremely large, ranging from 17.84 for Puerto Rican applicants to 132.16 for African American applicants.

Based on Tables 7–10 and supporting statistical analyses attached to this report, I conclude that membership in certain ethnic groups is an extremely strong factor in the decision for acceptance. Native American, African American, Mexican American, and Puerto Rican applicants in the same LSAT x GPA grid cell as a Caucasian American applicant have odds of acceptance that is many, many (tens to hundreds) times that of a similarly situated Caucasian American applicant.

D. Relationship of acceptance and ethnicity controlling for other factors.

I performed statistical analyses that added a set of additional variables to the basic logistic regression analysis described in the previous section. In particular, indicator variables were included to represent Michigan Residency Status, being Female, and having received a Fee Waiver. Analyses of these variables without including ethnic groups showed that each of them was highly statistically related to the chance of acceptance for individuals in the same LSAT x GPA grid cell. In addition, two other variables were added, the departure of the individual applicant's GPA

from the average GPA in the grid cell and the departure of the individual applicant's LSAT score from the average LSAT score in the grid cell. Again, these two variables were highly statistically significantly related to the chance of acceptance for individuals in the same LSAT x GPA grid cell.

Table 11 reports the results from the logistic regression analysis with this model for 1995 acceptance data. Note that among the five additional factors, all but Fee Waiver were statistically significant. The estimated relative odds for Michigan residency is 6.59, reflecting the increase in odds of acceptance for a resident applicant compared to a non-resident applicant. This effect is quite large and reflects the stated admissions policy of giving preference to Michigan residents. The estimated relative odds for being female is 1.91, meaning that when all other variables are held constant, female applicants have odds 1.91 times that of a similarly situated male applicant. The estimated odds ratios for Within Cell GPA and Within Cell LSAT reflect the fact applicants with higher GPAs and higher LSAT scores within a grid cell have a higher chance of acceptance. Interestingly, the Fee Waiver variable is not statistically significant in this analysis. Recall that Fee Waiver is related to Ethnic Group. In this analysis, after including Ethnic Group, individuals receiving fee waivers are not at an advantage compared to individuals not receiving fee waivers. This means that, in particular, there is no evidence that Caucasian Americans receiving fee waivers have an advantage over Caucasian Americans not receiving fee waivers. The same comparison would hold for any particular ethnic group. Finally, note that the estimated relative odds for Native American, African American, Mexican American, and Puerto Rican applicants are again extremely large, ranging from 73.26 to 513.29.

Tables 12, 13, and 14 report the results from the logistic regression analyses with these additional factors for the 1996, 1997, and 1998 data, respectively. The results for 1996 in Table 12 essentially mirror those of 1995. Again, the estimated relative odds for Native American, African American, Mexican American, and Puerto Rican applicants are extremely large, ranging from 53.96 to 547.05. The results for 1997 in Table 13 are similar to 1995 and 1996, but two factors show up as statistically significant in the sense that the number of standard deviations for each of these factors is greater than 2.0. The Fee Waiver relative odds is estimated to be 1.77, meaning that for 1997, applicants who received fee waivers were estimated to have 1.77 times the odds of acceptance compared to applicants who did not receive a fee waiver, all other factors being equal. Also, Other Hispanic American applicants are indicated to have a greater chance of acceptance compared to similarly situated Caucasian applicants. Again, the estimated relative odds for Native American, African American, Mexican American, and Puerto Rican applicants are extremely large,

ranging from 31.79 to 90.99. Finally, the results for 1998 in Table 14 include a stronger effect of Other Hispanic Americans and no statistically significant effect for Fee Waiver. As with the other analyses, the estimated relative odds for Native American, African American, Mexican American, and Puerto Rican applicants are extremely large, ranging from 41.23 to 293.39.

Based on Tables 11–14 and supporting statistical analyses attached to this report, I conclude that membership in certain ethnic groups is an extremely strong factor in the decision for acceptance, even controlling for Michigan residency status, gender, receiving a fee waiver, within grid cell GPA and within cell LSAT score. Native American, African American, Mexican American, and Puerto Rican applicants in the same LSAT x GPA grid cell and with the same residency status, gender, and fee waiver status as a Caucasian American applicant have odds of acceptance that are many, many (tens to hundreds) times that of similarly situated Caucasian American applicants.

E. Relationship of acceptance and ethnicity controlling for selection index and other factors.

The University of Michigan summarizes undergraduate Grade Point Average and LSAT score in a combined measure, termed the Selection Index. Formulas for the index were derived from the electronic database resulting in the following equations

1995

$$\text{Index} = -3.2950 + 0.3240 * \text{GPA} + 0.0320 * \text{LSAT}$$

1996

$$\text{Index} = -3.2950 + 0.3240 * \text{GPA} + 0.0320 * \text{LSAT}$$

1997

$$\text{Index} = -3.3660 + 0.3650 * \text{GPA} + 0.0320 * \text{LSAT}$$

1998

$$\text{Index} = -2.9270 + 0.3420 * \text{GPA} + 0.0300 * \text{LSAT}$$

I carried out analyses relating acceptance and ethnicity controlling for selection index, Michigan residency status, gender, and receiving a fee waiver. Selection index groups (analogous to grid cells) were formed from rounded 2 digit selection index values, with adjacent values pooled to ensure the estimated probability of acceptance does not decrease as the selection index increases. Tables 15–18 give the results of the logistic regression analyses controlling for selection index group and the three other factors. The results are substantively identical to the logistic regression results given in the previous section. For each year, the estimated relative odds for Native American, African American, Mexican American, and Puerto Rican applicants are extremely large, with all the relative odds estimates exceeding the extremely large value of 30.0 and with many larger than 30.0. The effects of Michigan residency status and being female are consistently positive, but a much smaller magnitude than the ethnic group effects. Fee waiver is only statistically significant in 1997 and shows inconsistent results across the other years.

In addition to the logistic regression analyses, the selection index can be used to compare directly the estimated probabilities of success as a function of the selection index across ethnic groups. Figure 9 graphs the maximum likelihood estimates of the probability of success (constraining the curve to be non-decreasing) for 1995 Native American applicants and 1995 Caucasian American applicants. The Native American estimate is the line with asterisks and is shifted to the left of (or above) the Caucasian American estimate. The steepness of the estimates (particularly over the 0.2–0.8 probability range) shows how closely acceptance decisions are related to the selection index for each group. For a given selection index value, however, it is clear that the probability of acceptance is greater, sometimes much greater, for Native American applicants compared to Caucasian American applicants. Figure 10 graphs the maximum likelihood estimates of the probability of success for 1995 African American applicants and 1995 Caucasian American applicants. Again there is great separation with the estimate for African American applicants shifted far to the left of the estimate for Caucasian applicants. Note, for instance, at a selection index value around 2.70, the estimated probability of acceptance exceeds 40% for African American applicants, but was 0% for Caucasian applicants. Figure 11 compares the estimated probability of success for 1995 Mexican American and Caucasian applicants. Note again the wide separation of the curves indicating the much higher probability of acceptance for Mexican American applicants at a given selection index value. Figures 12–16 give the remaining comparisons of applicants from the other ethnic groups to Caucasian American applicants. Figures 12, 13, 15, and 16 have considerable overlap in the estimated curves which means that the probabilities of success are similar for the particular ethnic group

and Caucasian Americans. Figure 14 again show a wide separation indicating the much higher probability of acceptance for Puerto Rican applicants compared to Caucasian American applicants at a given selection index value. Figures 17–40 give the comparisons for 1996, 1997, and 1998. All the graphs comparing Native American, African American, Mexican American and Puerto Rican applicants to Caucasian American applicants show wide separation indicating a much higher probability of acceptance for the particular ethnic group at a given selection index value.

Based on Tables 15–18, Figures 9–40, and supporting statistical analyses attached to this report, I conclude that membership in certain ethnic groups is an extremely strong factor in the decision for acceptance, controlling for Selection Index, Michigan residency status, gender, and receiving a fee waiver. Native American, African American, Mexican American, and Puerto Rican applicants at the same selection index value as a Caucasian American applicant have probabilities of acceptance that are much, much higher than that of a Caucasian American applicant at the same index value.

F. Supplementation and Rebuttal.

In addition to the opinions set forth above, as additional information becomes available in the discovery process I may be requested to do additional analyses and supplement my opinion in light of the additional information. Also, I may be requested to do additional statistical analyses and provide additional opinions as appropriate in rebuttal to statistical opinions or other evidence offered on behalf of defendants.

II. DATA OR OTHER INFORMATION CONSIDERED

In addition to my education, experience, general knowledge and expertise in matters relating to statistical analyses, I have specifically considered the following information and data in the course of my work leading to the preparation of this report:

Computer readable admissions information.

Hard copy of reports on University of Michigan Law School admission.

Copies of admissions policies.

Copy of 1995 Committee of Visitors report.

III. QUALIFICATIONS AND PUBLICATIONS

Please see my Academic Curriculum Vitae, which is attached as Exhibit B to this report.

IV. COMPENSATION

My statistical consultation work and associated activities, including any testimony in this matter will be billed at my standard consulting rate: \$185.00 per hour.

V. OTHER CASES

Please see the attached Exhibit C to this report. ‡

(signed)
Kinley Larntz, Ph.D.

‡ Exhibit C has not been reproduced here.

TABLE I
NUMBER OF APPLICATIONS BY ETHNIC GROUP FOR ALL APPLICANTS

ETHNIC GROUP	1995	1996	1997	1998
Native American	45	31	37	40
African American	404	342	320	304
Caucasian American	2316	2122	1964	2041
Mexican American	98	91	95	82
Other Hispanic American	115	95	68	68
Asian/Pacific Island American	470	421	367	386
Puerto Rican	20	24	18	15
Foreign	112	126	168	141
Unknown Ethnicity	567	425	392	460
Total	4147	3677	3429	3537

TABLE 2
MEDIAN UNDERGRADUATE GPA BY ETHNIC GROUP FOR ALL APPLICANTS

ETHNIC GROUP	1995	1996	1997	1998
Native American	3.14	3.26	3.41	3.48
African American	3.03	3.11	3.16	3.15
Caucasian American	3.55	3.56	3.58	3.55
Mexican American	3.31	3.32	3.21	3.30
Other Hispanic American	3.56	3.42	3.39	3.44
Asian/Pacific Island American	3.48	3.51	3.51	3.50
Puerto Rican	3.14	3.22	3.11	3.32
Foreign	3.46	3.47	3.48	3.57
Unknown Ethnicity	3.53	3.51	3.58	3.55
Total	3.49	3.51	3.52	3.51

TABLE 3
 MEDIAN LSAT SCORE BY ETHNIC GROUP FOR ALL APPLICANTS

ETHNIC GROUP	1995	1996	1997	1998
Native American	154	159	158	158
African American	150	151	152	151
Caucasian American	163	164	164	164
Mexican American	155	156	155	157
Other Hispanic American	156	159	160	159
Asian/Pacific Island American	161	163	162	163
Puerto Rican	155	157	158	158
Foreign	157	156	156	159
Unknown Ethnicity	163	163	164	164
Total	162	163	163	163

TABLE 4
 PERCENTAGE OF FEE WAIVERS BY ETHNIC GROUP FOR ALL APPLICANTS

ETHNIC GROUP	1995	1996	1997	1998
Native American	28.9%	41.9%	35.1%	12.5%
African American	31.9	40.9	32.2	32.6
Caucasian American	7.0	8.9	8.8	7.5
Mexican American	37.8	39.6	33.7	24.4
Other Hispanic American	22.6	12.6	4.4	10.3
Asian/Pacific Island American	10.0	12.4	10.6	8.8
Puerto Rican	15.0	29.2	5.6	13.3
Foreign	16.1	16.7	9.5	17.7
Unknown Ethnicity	7.2	8.9	11.5	10.0
Total	11.5%	13.8%	12.4%	11.1%

TABLE 5
 MEDIAN UNDERGRADUATE GPA BY ETHNIC GROUP
 FOR ACCEPTED APPLICANTS

ETHNIC GROUP	1995	1996	1997	1998
Native American	3.36	3.44	3.51	3.61
African American	3.33	3.46	3.35	3.41
Caucasian American	3.68	3.66	3.67	3.66
Mexican American	3.50	3.54	3.54	3.59
Other Hispanic American	3.60	3.61	3.48	3.63
Asian/Pacific Island American	3.63	3.66	3.58	3.67
Puerto Rican	3.30	3.61	3.48	3.33
Foreign	3.75	3.65	3.61	3.65
Unknown Ethnicity	3.68	3.66	3.71	3.68
Total	3.64	3.64	3.64	3.64

TABLE 6
 MEDIAN LSAT SCORE BY ETHNIC GROUP FOR ACCEPTED APPLICANTS

ETHNIC GROUP	1995	1996	1997	1998
Native American	162	161	161	160
African American	159	159	160	159
Caucasian American	169	169	169	168
Mexican American	160	163	161	160
Other Hispanic American	167	171	168	164
Asian/Pacific Island American	168	169	168	168
Puerto Rican	159	160	164	161
Foreign	168	168	168	169
Unknown Ethnicity	168	168	169	168
Total	168	168	168	168

TABLE 7
1995 RELATIVE ODDS OF ACCEPTANCE
CONTROLLING FOR GPA x LSAT GRID CELL

ETHNIC GROUP	ESTIMATED RELATIVE ODDS	STANDARD DEVIATIONS
Native American	61.37	7.44
African American	257.93	14.4
Caucasian American	1.0	—
Mexican American	81.9	11.74
Other Hispanic American	1.03	0.07
Asian/Pacific Island American	1.35	1.69
Puerto Rican	37.86	4.95
Foreign	0.55	-1.31
Unknown Ethnicity	1.18	1.07

TABLE 8
1996 RELATIVE ODDS OF ACCEPTANCE
CONTROLLING FOR GPA x LSAT GRID CELL

ETHNIC GROUP	ESTIMATED RELATIVE ODDS	STANDARD DEVIATIONS
Native American	29.81	6.09
African American	313.59	13.18
Caucasian American	1.00	—
Mexican American	81.46	9.25
Other Hispanic American	0.54	-1.22
Asian/Pacific Island American	0.93	-0.36
Puerto Rican	45.40	5.19
Foreign	0.44	-1.49
Unknown Ethnicity	1.09	0.46

TABLE 9
1997 RELATIVE ODDS OF ACCEPTANCE
CONTROLLING FOR GPA x LSAT GRID CELL

ETHNIC GROUP	ESTIMATED RELATIVE ODDS	STANDARD DEVIATIONS
Native American	37.37	6.79
African American	53.49	13.96
Caucasian American	1.0	—
Mexican American	17.55	7.86
Other Hispanic American	1.77	1.35
Asian/Pacific Island American	1.15	0.72
Puerto Rican	32.78	4.02
Foreign	0.45	-1.73
Unknown Ethnicity	0.92	-0.45

TABLE 10
1998 RELATIVE ODDS OF ACCEPTANCE
CONTROLLING FOR GPA x LSAT GRID CELL

ETHNIC GROUP	ESTIMATED RELATIVE ODDS	STANDARD DEVIATIONS
Native American	23.98	6.52
African American	132.16	13.46
Caucasian American	1.00	—
Mexican American	23.53	8.14
Other Hispanic American	7.48	4.87
Asian/Pacific Island American	0.98	-0.12
Puerto Rican	17.84	4.39
Foreign	0.32	-2.41
Unknown Ethnicity	1.10	0.56

TABLE 11
1995 RELATIVE ODDS OF ACCEPTANCE
CONTROLLING FOR GPA X LSAT GRID CELL PLUS OTHER FACTORS

ETHNIC GROUP	ESTIMATED RELATIVE ODDS	STANDARD DEVIATIONS
Michigan Residency	6.59	10.67
Female	1.91	5.40
Fee Waiver	1.07	0.28
Within Cell GPA (per 0.1 point)	1.25	2.89
Within Cell LSAT	1.32	5.13
Native American	116.98	7.93
African American	513.29	14.92
Caucasian American	1.0	—
Mexican American	183.81	13.03
Other Hispanic American	1.39	0.70
Asian/Pacific Island American	1.56	2.33
Puerto Rican	73.26	5.63
Foreign	0.65	-0.88
Unknown Ethnicity	1.23	1.26

TABLE 12
1996 RELATIVE ODDS OF ACCEPTANCE
CONTROLLING FOR GPA X LSAT GRID CELL PLUS OTHER FACTORS

ETHNIC GROUP	ESTIMATED RELATIVE ODDS	STANDARD DEVIATIONS
Michigan Residency	4.88	8.56
Female	1.84	4.66
Fee Waiver	1.25	0.91
Within Cell GPA (per 0.1 point)	1.35	3.48
Within Cell LSAT	1.50	5.96
Native American	53.96	6.70
African American	547.05	13.29
Caucasian American	1.00	—
Mexican American	158.09	9.89
Other Hispanic American	0.79	-0.44
Asian/Pacific Island American	0.99	-0.04
Puerto Rican	78.65	5.94
Foreign	0.52	-1.12
Unknown Ethnicity	1.13	0.63

TABLE 13
1997 RELATIVE ODDS OF ACCEPTANCE
CONTROLLING FOR GPA X LSAT GRID CELL PLUS OTHER FACTORS

ETHNIC GROUP	ESTIMATED RELATIVE ODDS	STANDARD DEVIATIONS
Michigan Residency	5.50	9.71
Female	1.89	4.94
Fee Waiver	1.77	2.25
Within Cell GPA (per 0.1 point)	1.44	4.35
Within Cell LSAT	1.43	5.13
Native American	65.86	7.31
African American	82.81	13.79
Caucasian American	1.00	—
Mexican American	31.79	8.67
Other Hispanic American	2.78	2.29
Asian/Pacific Island American	1.33	1.38
Puerto Rican	90.99	4.71
Foreign	0.51	-1.38
Unknown Ethnicity	0.92	-0.41

TABLE 14
1998 RELATIVE ODDS OF ACCEPTANCE
CONTROLLING FOR GPA X LSAT GRID CELL PLUS OTHER FACTORS

ETHNIC GROUP	ESTIMATED RELATIVE ODDS	STANDARD DEVIATIONS
Michigan Residency	4.03	7.66
Female	1.41	2.70
Fee Waiver	0.76	-0.97
Within Cell GPA (per 0.1 point)	2.07	8.38
Within Cell LSAT	1.42	5.59
Native American	39.06	7.20
African American	293.39	14.49
Caucasian American	1.00	—
Mexican American	48.16	9.12
Other Hispanic American	11.71	5.63
Asian/Pacific Island American	1.15	0.70
Puerto Rican	41.23	5.35
Foreign	0.35	-2.07
Unknown Ethnicity	1.10	0.52

TABLE 15
1995 RELATIVE ODDS OF ACCEPTANCE
CONTROLLING FOR SELECTION INDEX PLUS OTHER FACTORS

ETHNIC GROUP	ESTIMATED RELATIVE ODDS	STANDARD DEVIATIONS
Michigan Residency	5.37	10.21
Female	1.73	4.79
Fee Waiver	1.16	0.72
Native American	47.25	7.67
African American	218.65	15.96
Caucasian American	1.00	—
Mexican American	89.76	12.99
Other Hispanic American	1.44	0.80
Asian/Pacific Island American	1.54	2.35
Puerto Rican	39.12	5.15
Foreign	0.50	-1.35
Unknown Ethnicity	1.16	0.94

TABLE 16
1996 RELATIVE ODDS OF ACCEPTANCE
CONTROLLING FOR SELECTION INDEX PLUS OTHER FACTORS

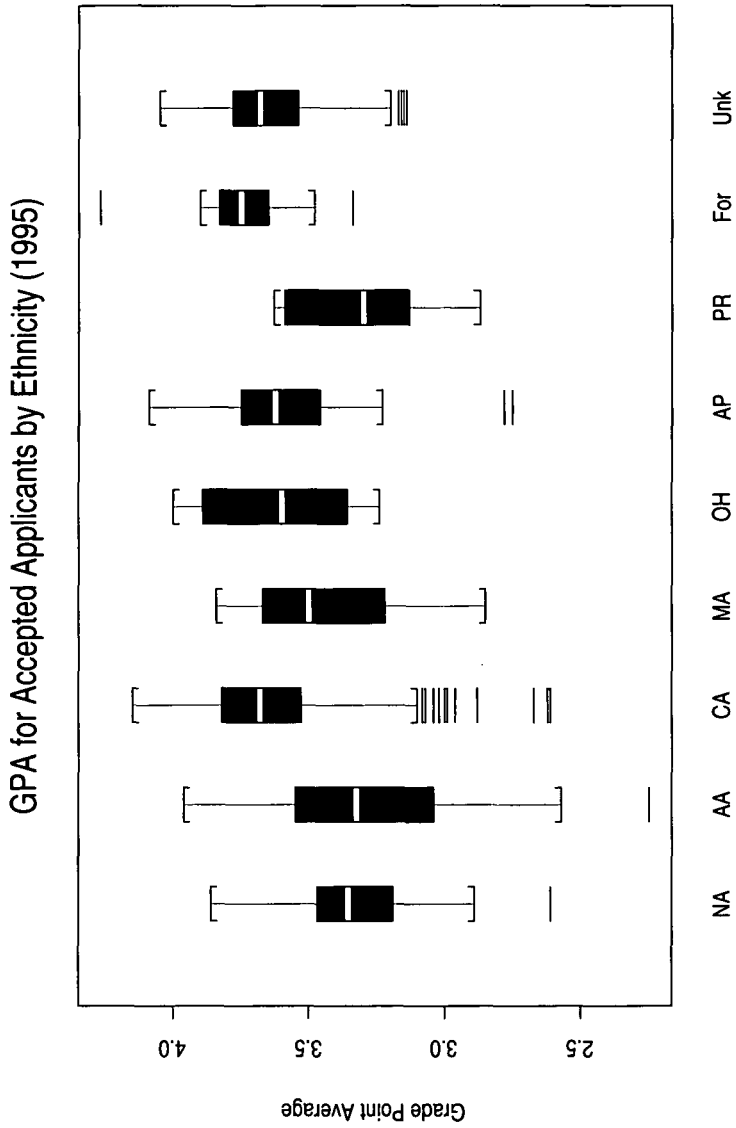
ETHNIC GROUP	ESTIMATED RELATIVE ODDS	STANDARD DEVIATIONS
Michigan Residency	4.02	7.88
Female	1.53	3.39
Fee Waiver	1.28	0.99
Native American	59.34	6.97
African American	277.95	13.45
Caucasian American	1.00	—
Mexican American	95.00	9.85
Other Hispanic American	0.96	-0.07
Asian/Pacific Island American	1.07	0.32
Puerto Rican	58.59	5.84
Foreign	0.67	-0.66
Unknown Ethnicity	1.15	0.72

TABLE 17
1997 RELATIVE ODDS OF ACCEPTANCE
CONTROLLING FOR SELECTION INDEX PLUS OTHER FACTORS

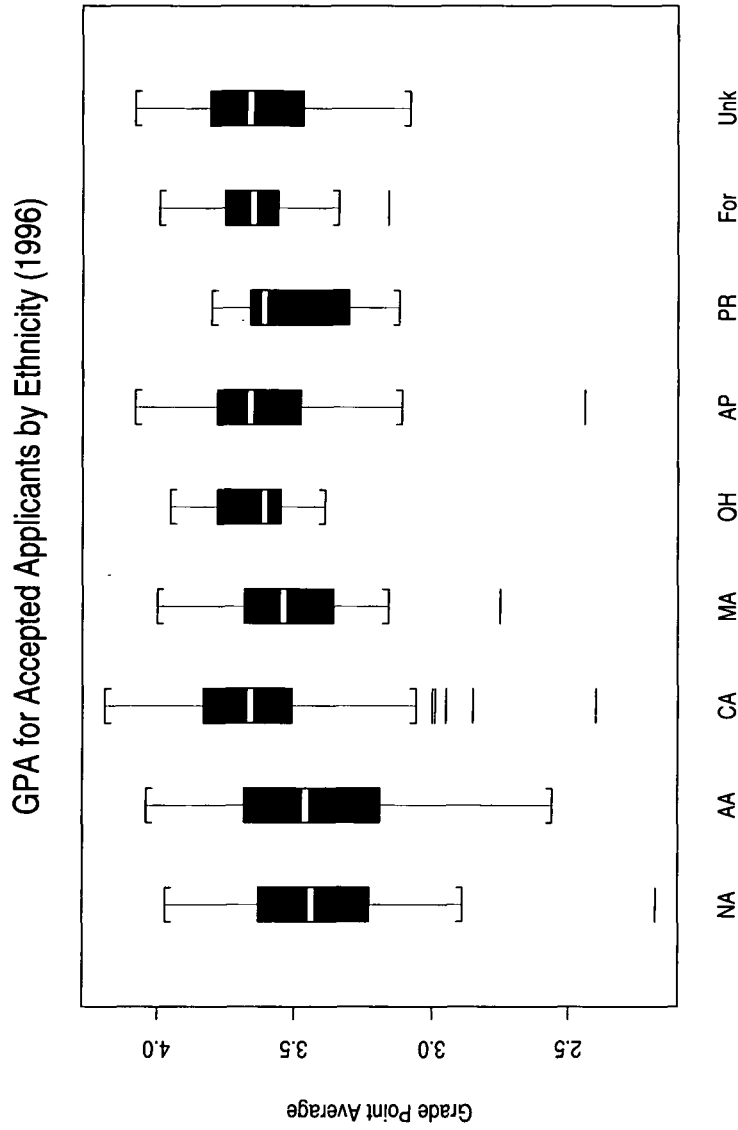
ETHNIC GROUP	ESTIMATED RELATIVE ODDS	STANDARD DEVIATIONS
Michigan Residency	4.26	8.45
Female	1.72	4.49
Fee Waiver	1.73	2.28
Native American	43.49	7.15
African American	85.43	13.96
Caucasian American	1.00	—
Mexican American	31.60	9.12
Other Hispanic American	2.64	2.22
Asian/Pacific Island American	1.66	2.65
Puerto Rican	97.82	5.26
Foreign	0.53	-1.33
Unknown Ethnicity	0.99	-0.08

TABLE 18
1998 RELATIVE ODDS OF ACCEPTANCE
CONTROLLING FOR SELECTION INDEX PLUS OTHER FACTORS

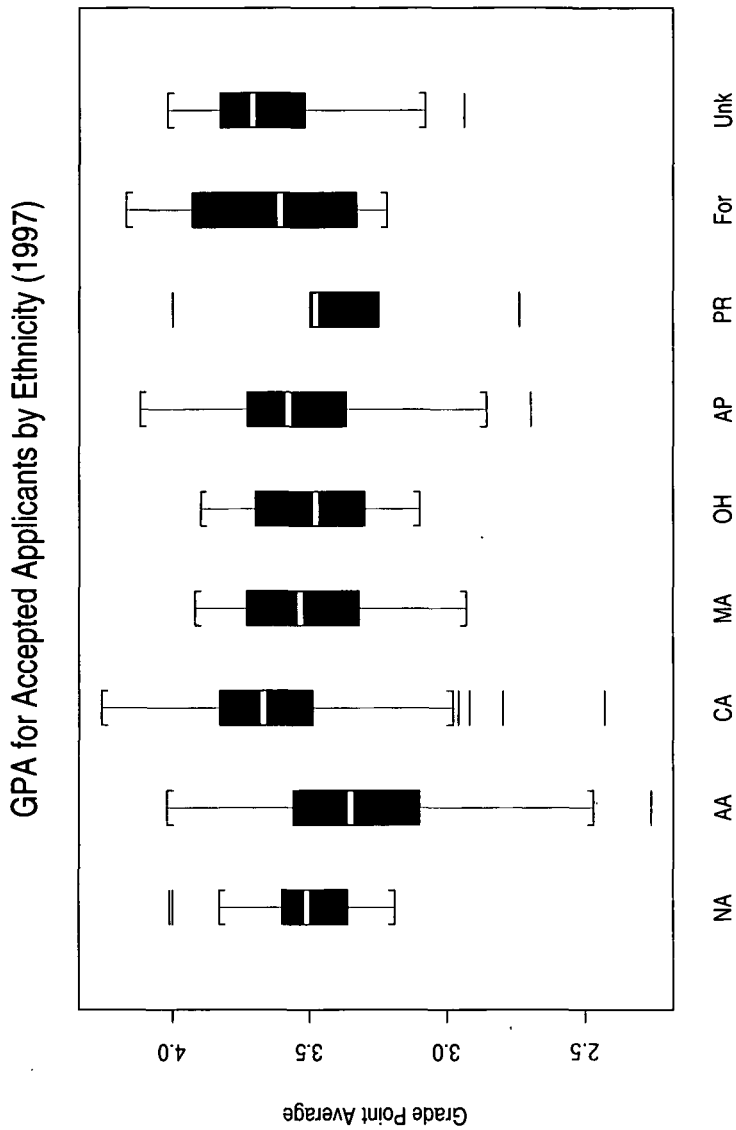
ETHNIC GROUP	ESTIMATED RELATIVE ODDS	STANDARD DEVIATIONS
Michigan Residency	3.46	7.12
Female	1.26	1.94
Fee Waiver	0.85	-0.60
Native American	31.85	6.95
African American	204.70	14.39
Caucasian American	1.0	—
Mexican American	36.25	8.85
Other Hispanic American	12.63	5.83
Asian/Pacific Island American	1.16	0.78
Puerto Rican	39.94	5.27
Foreign	0.53	-1.29
Unknown Ethnicity	1.11	0.56



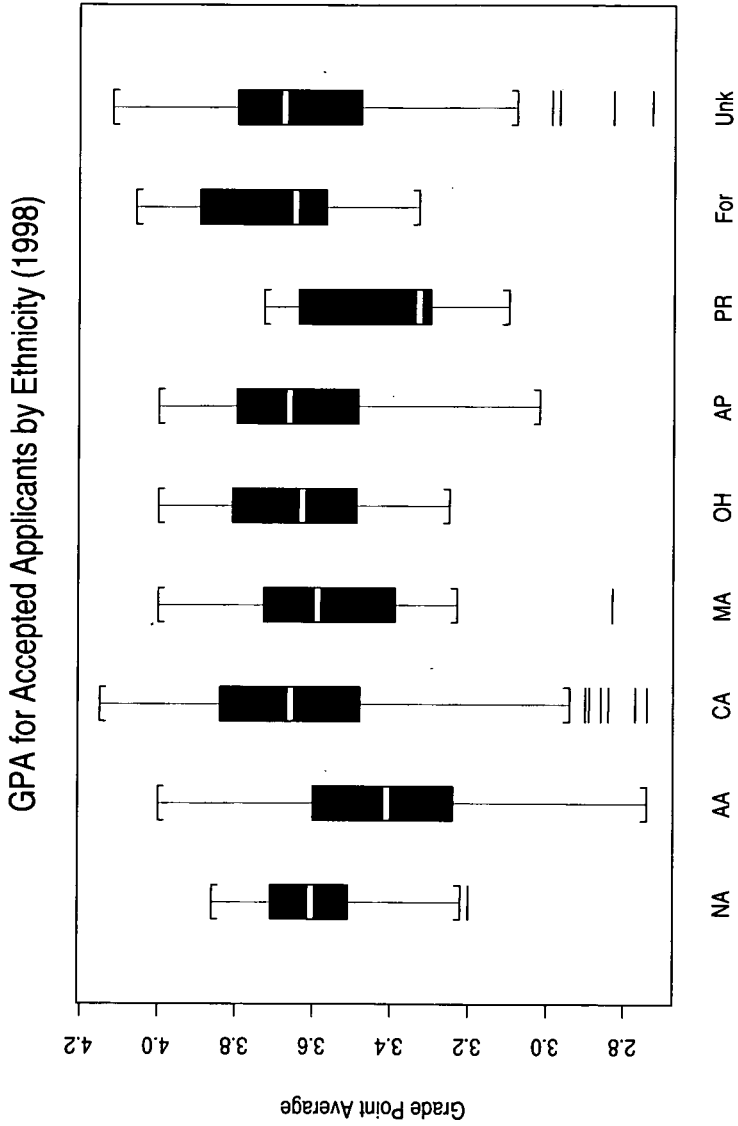
Ethnic Group
Figure 1



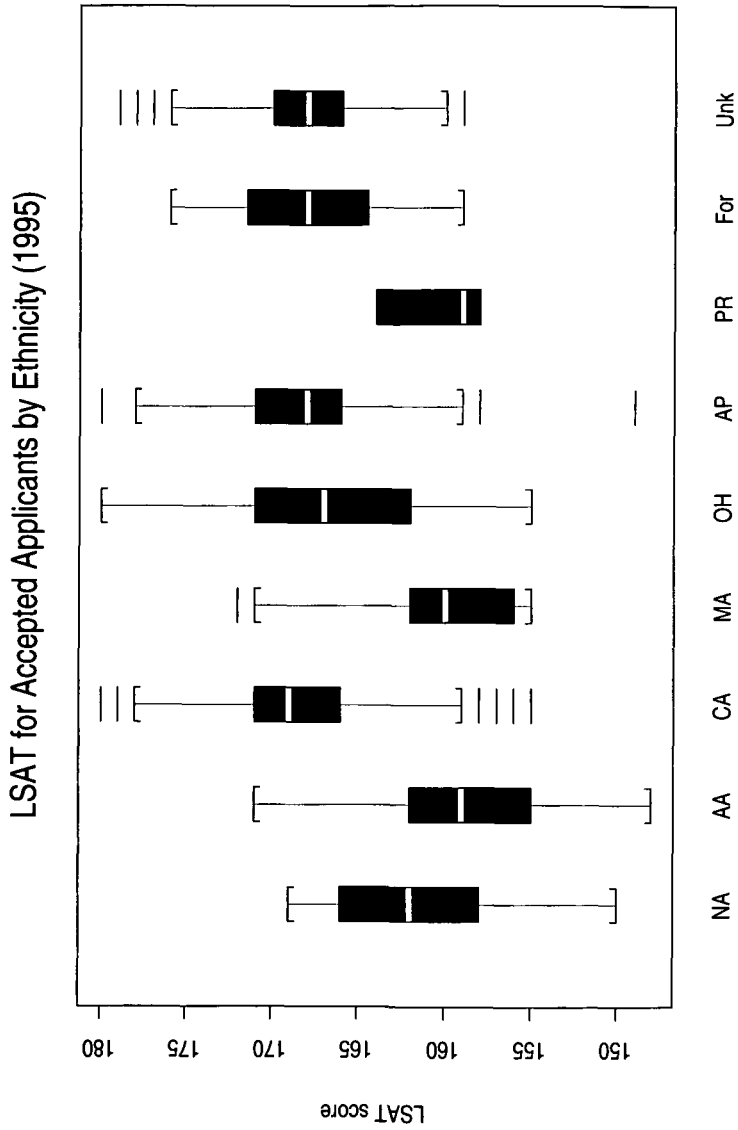
Ethnic Group
Figure 2



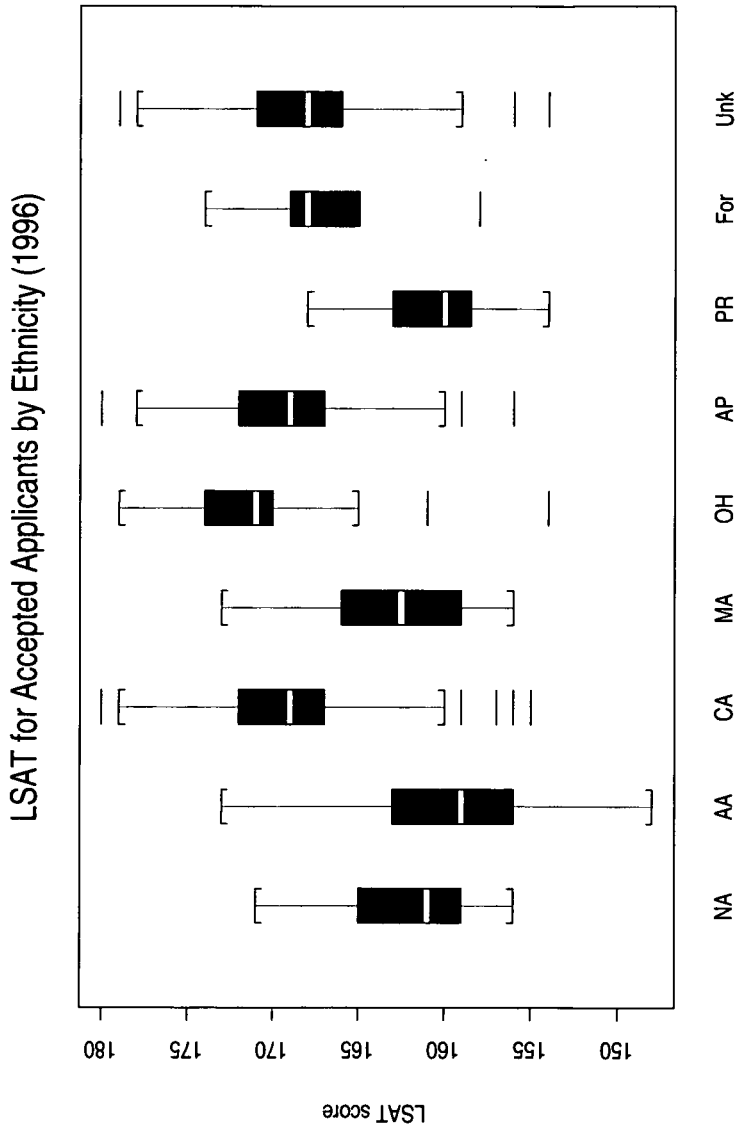
Ethnic Group
Figure 3



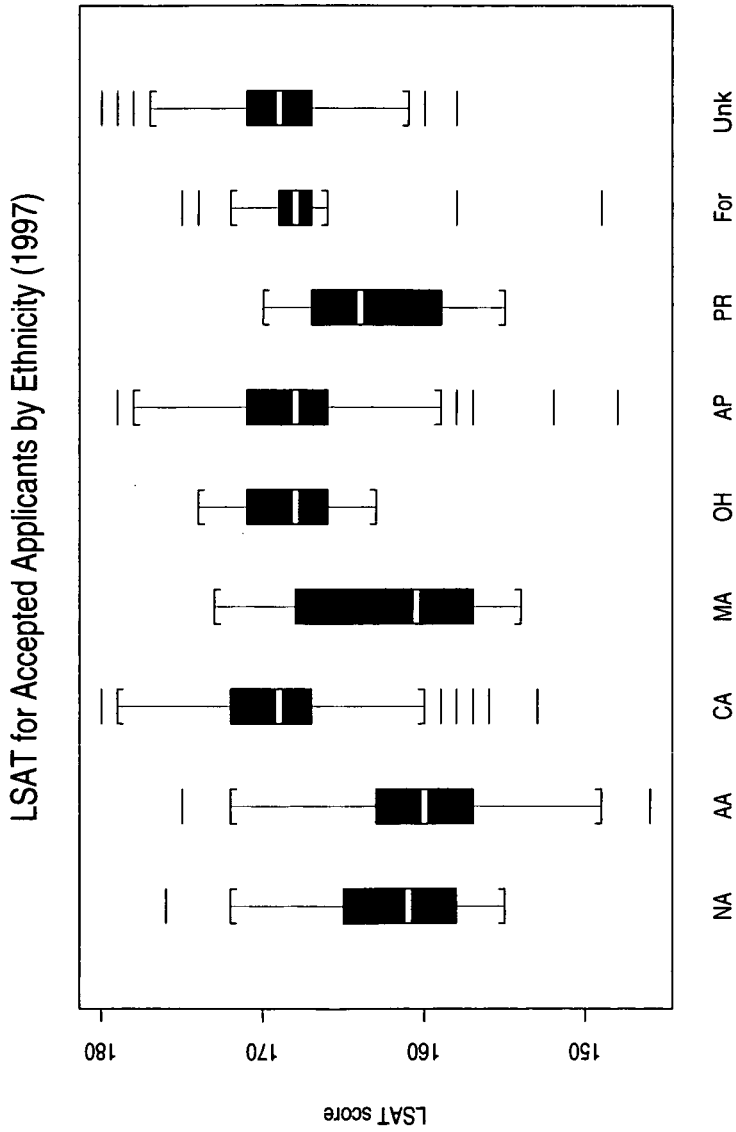
Ethnic Group
Figure 4



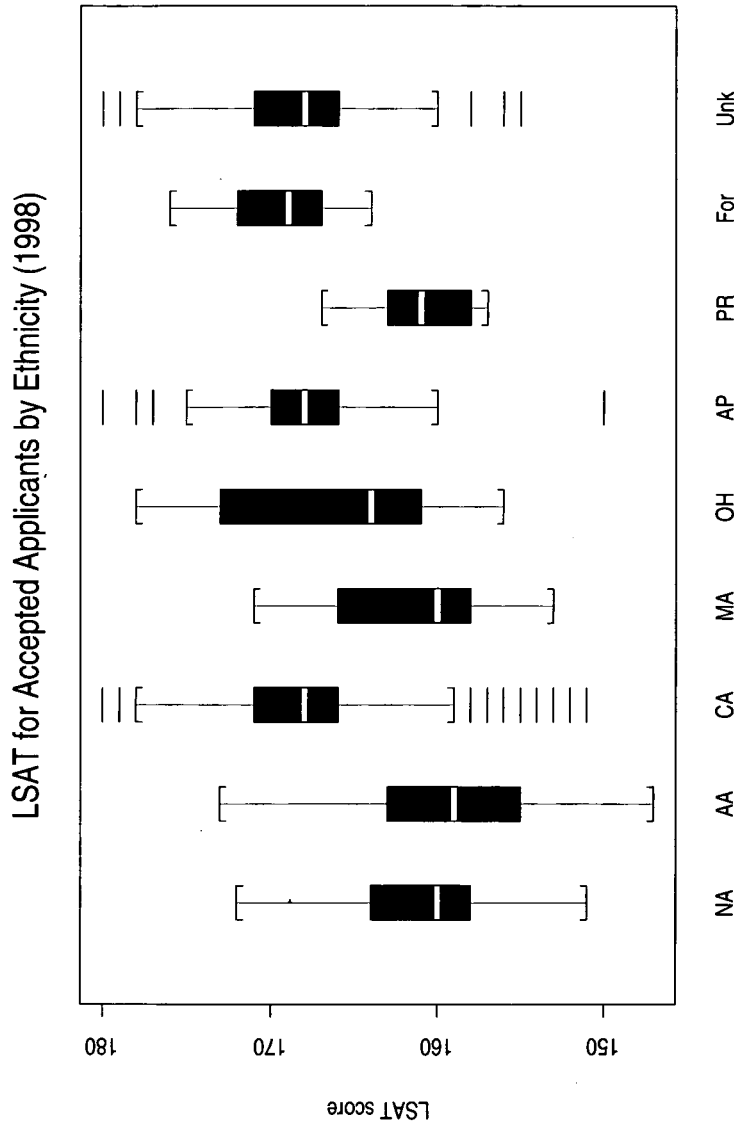
Ethnic Group
Figure 5



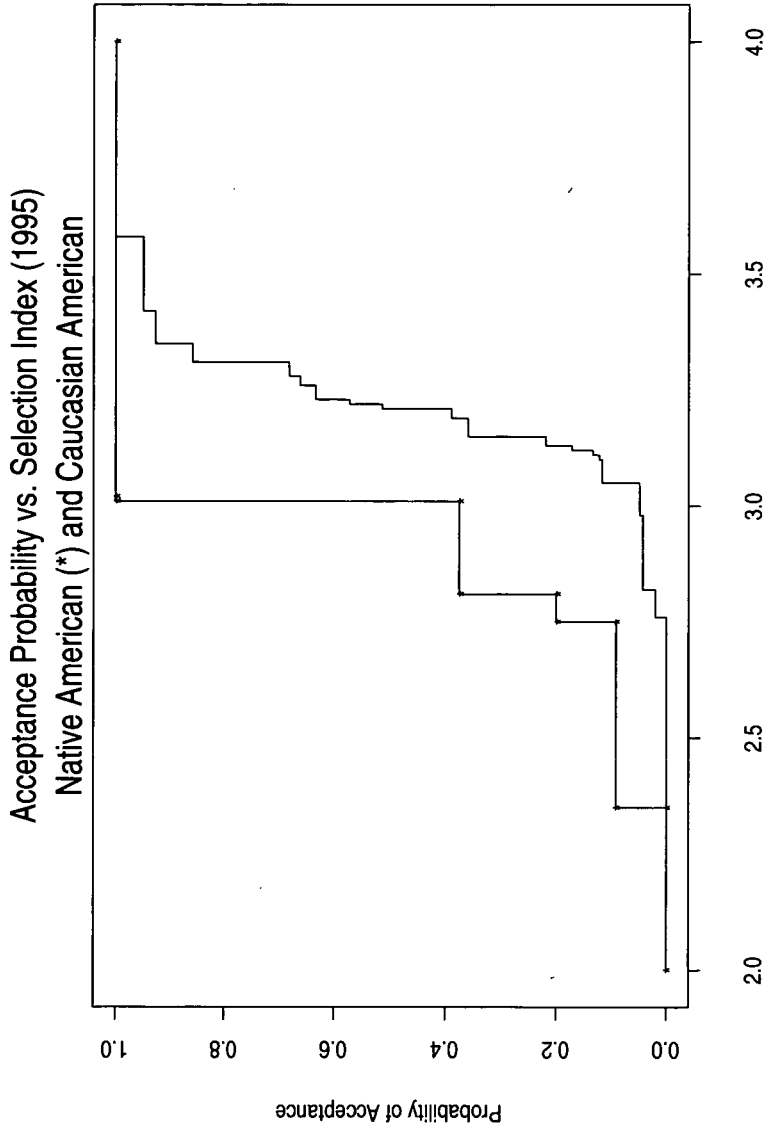
Ethnic Group
Figure 6



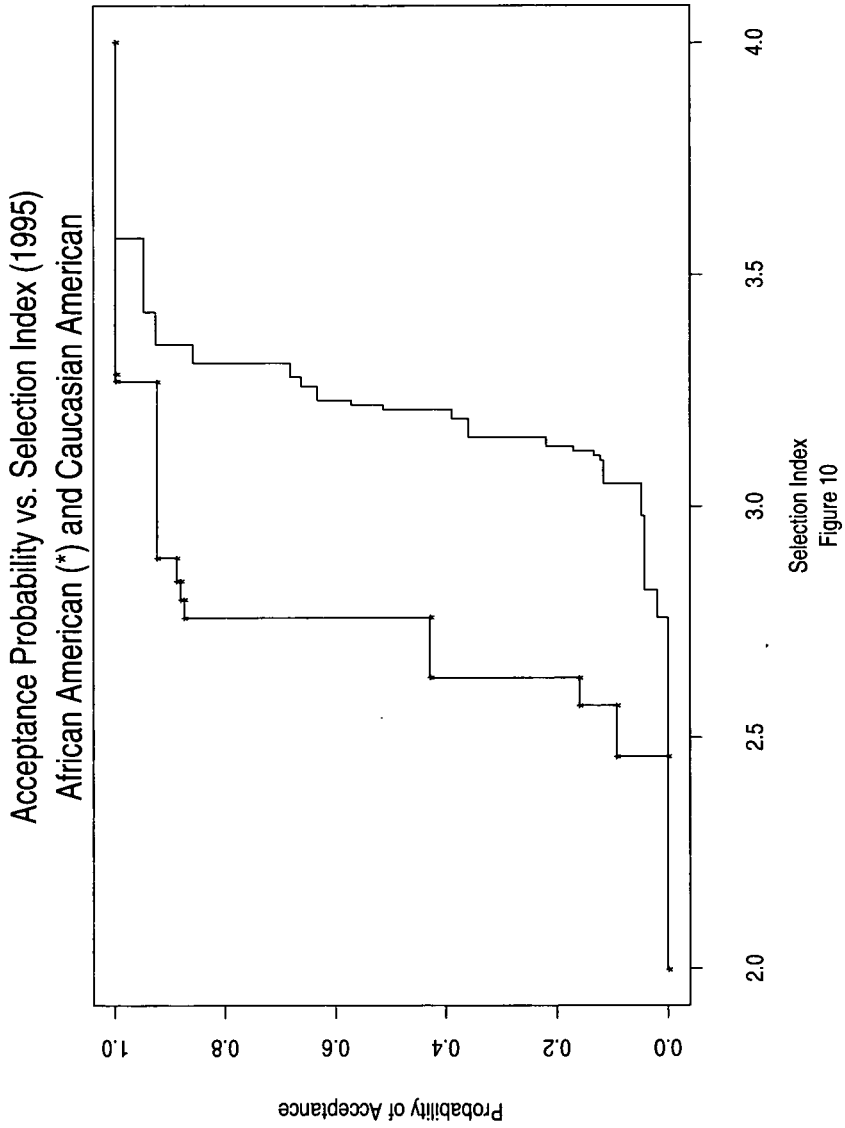
Ethnic Group
Figure 7

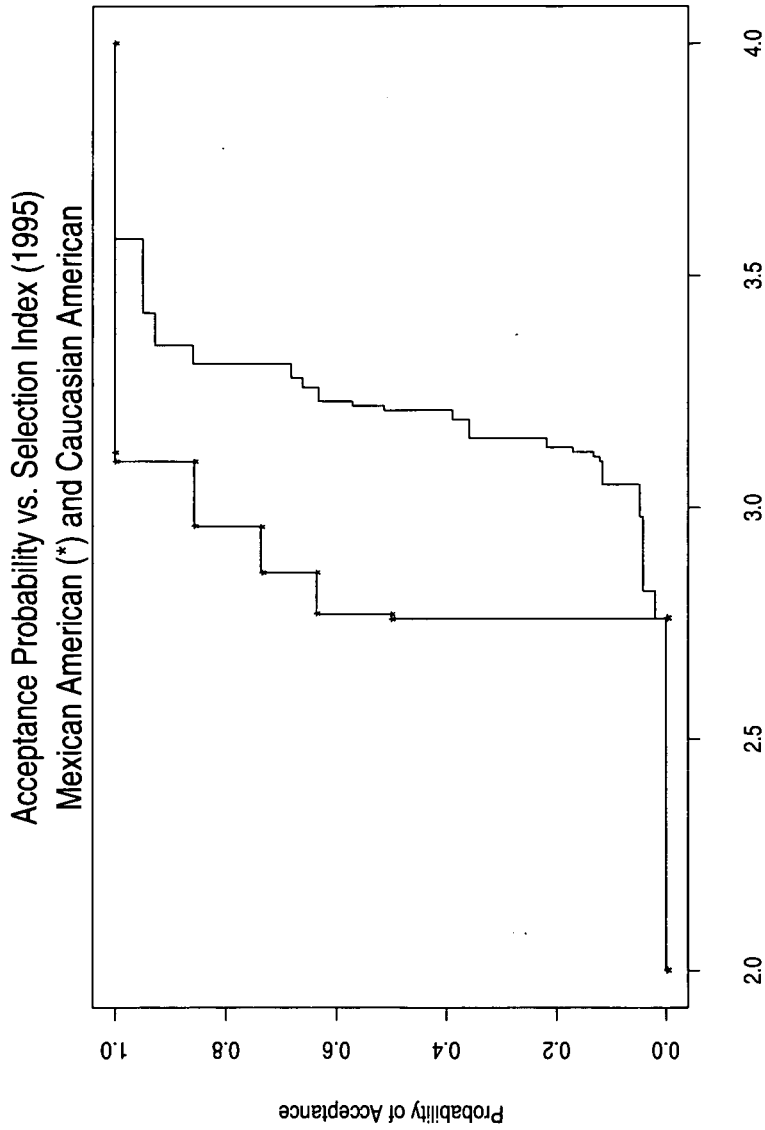


Ethnic Group
Figure 8

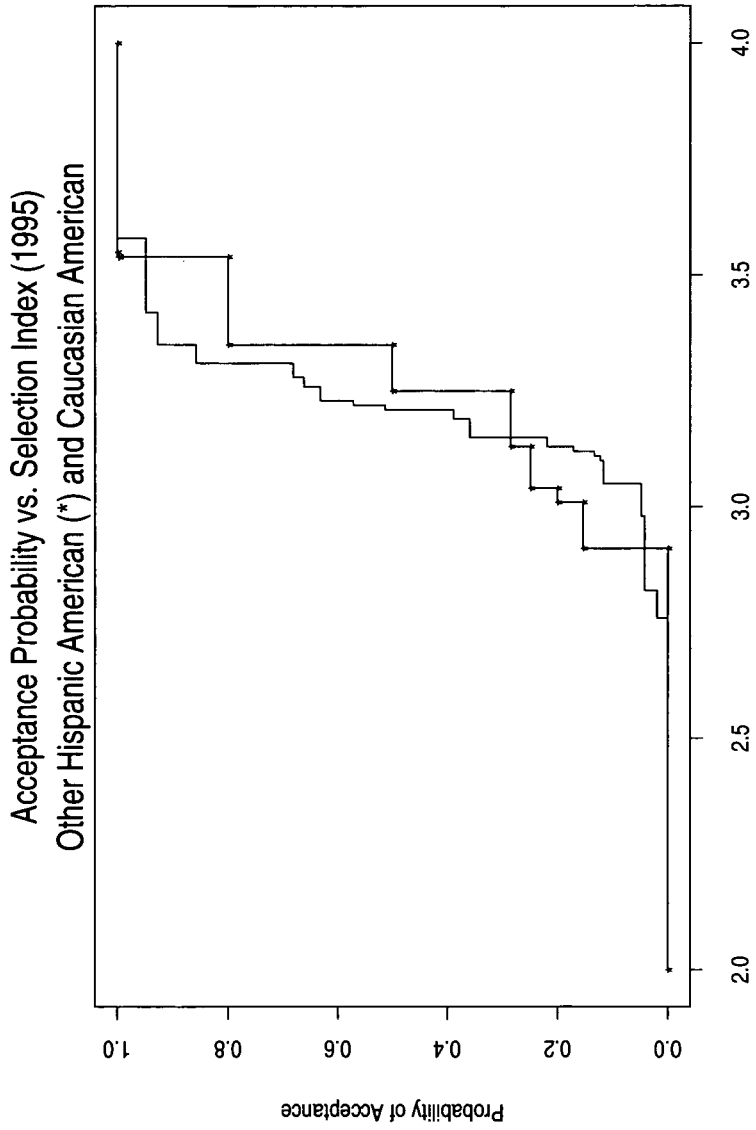


Selection Index
Figure 9

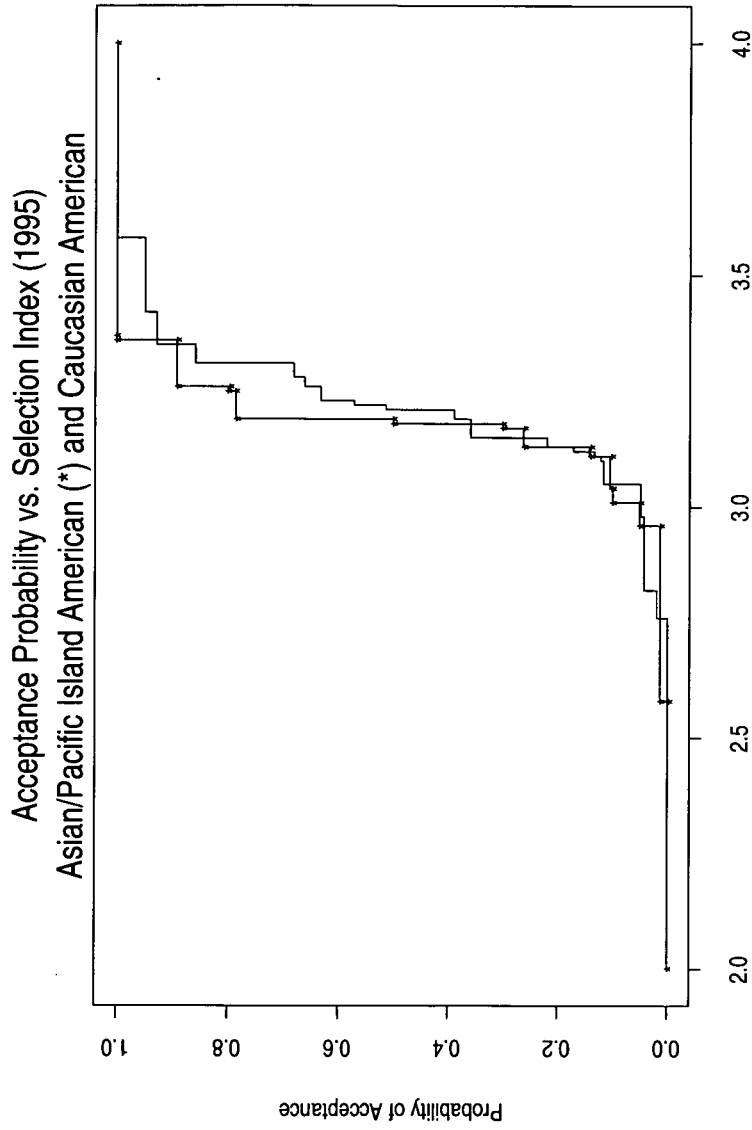




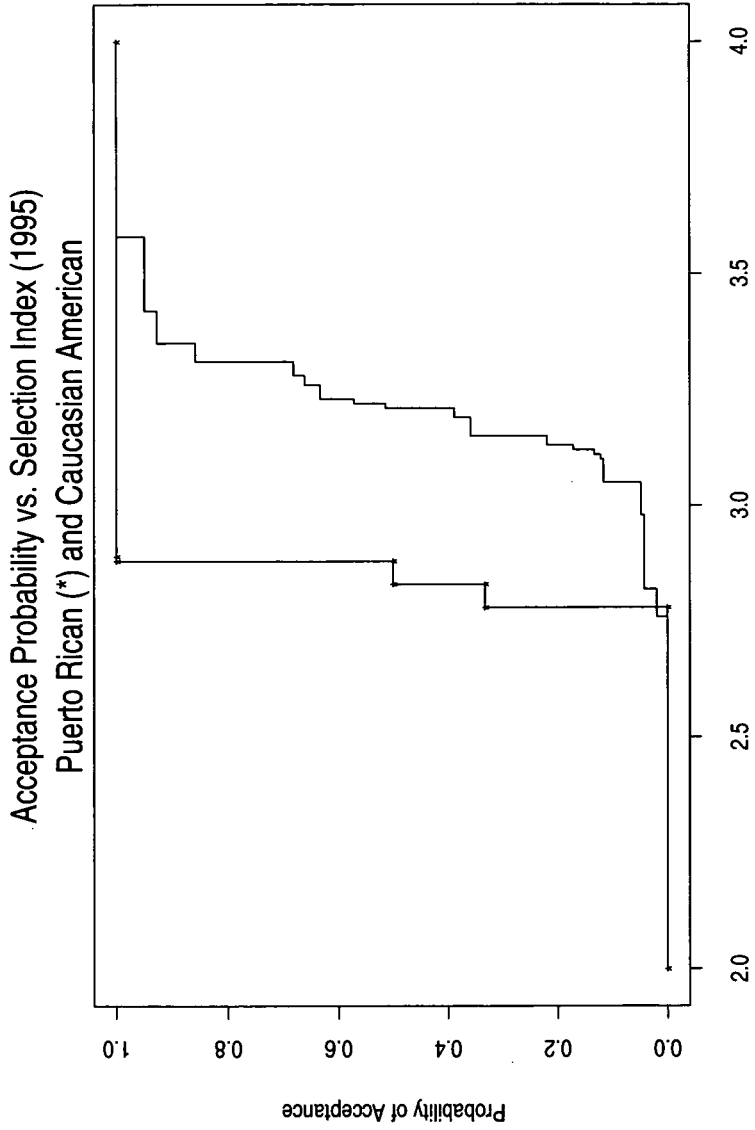
Selection Index
Figure 11



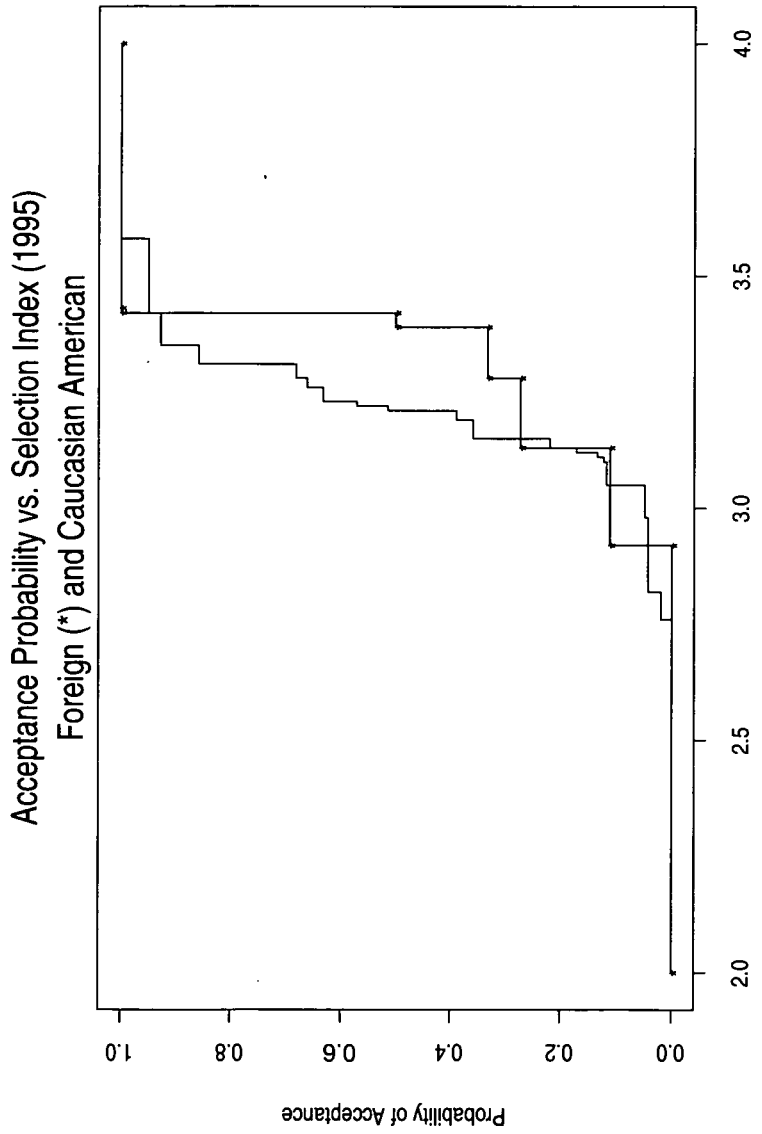
Selection Index
Figure 12



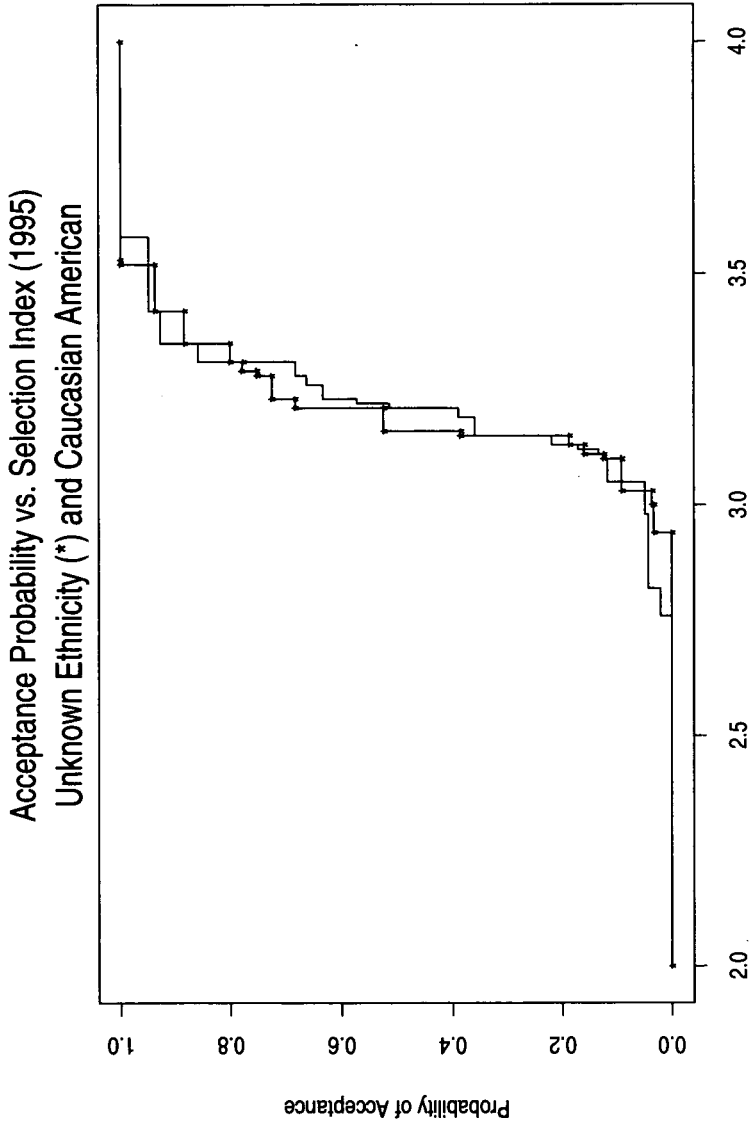
Selection Index
Figure 13



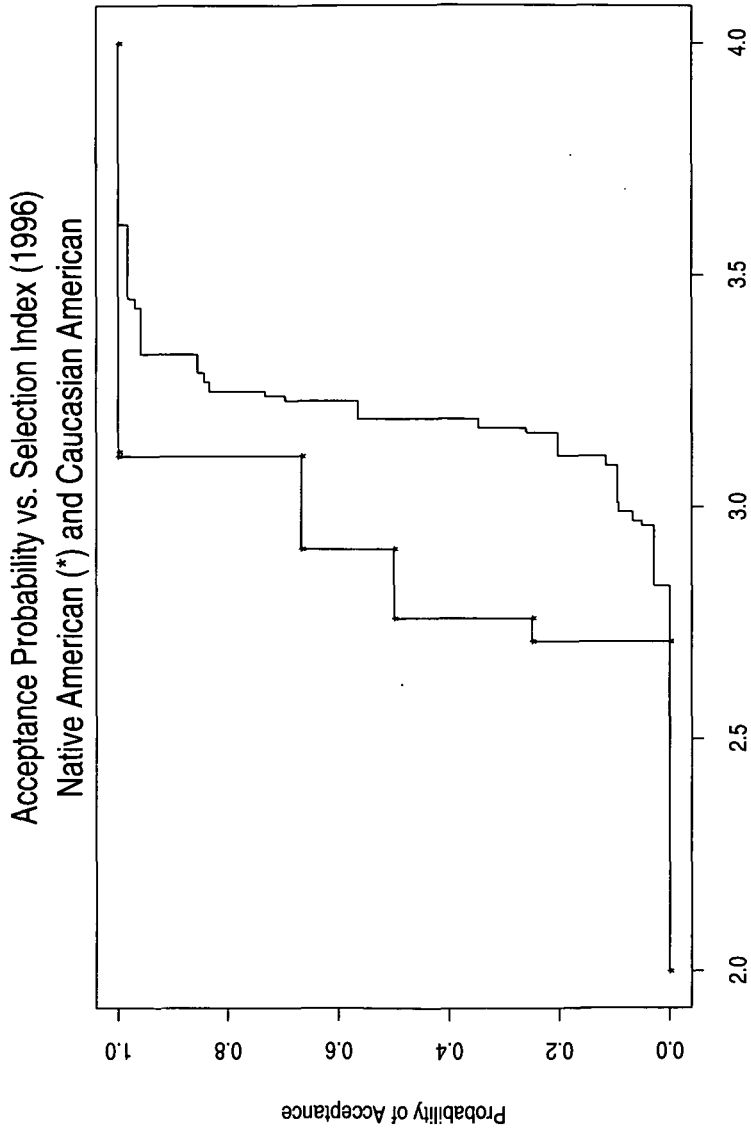
Selection Index
Figure 14



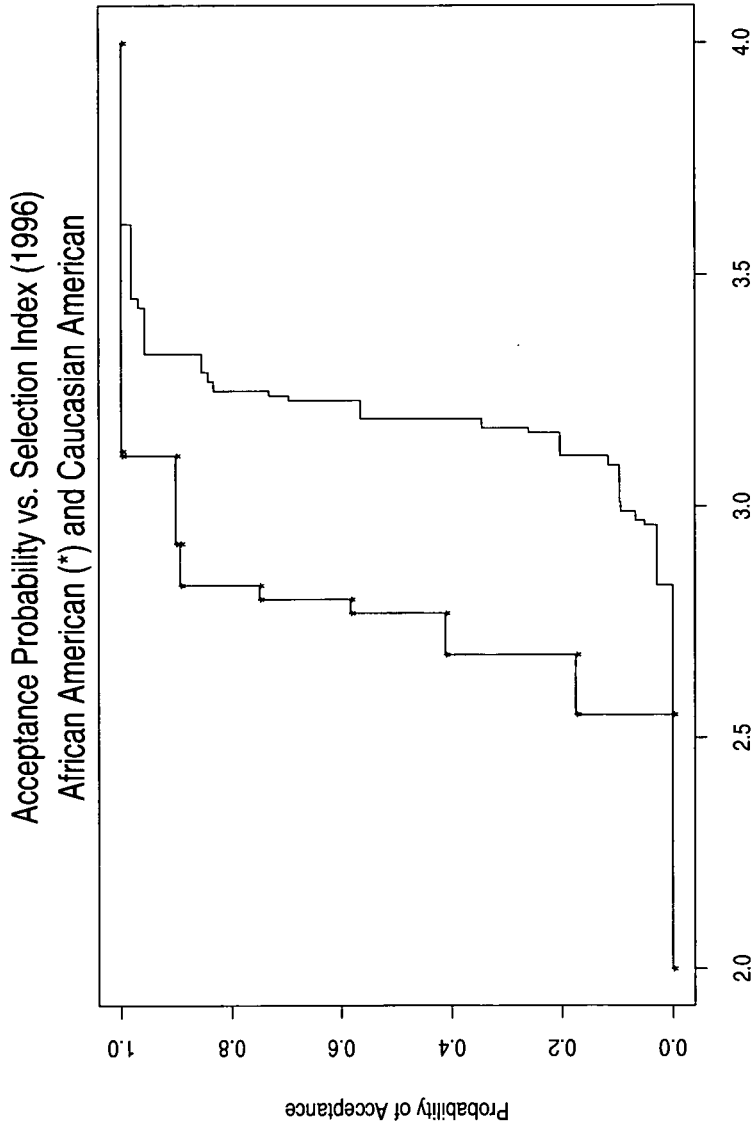
Selection Index
Figure 15



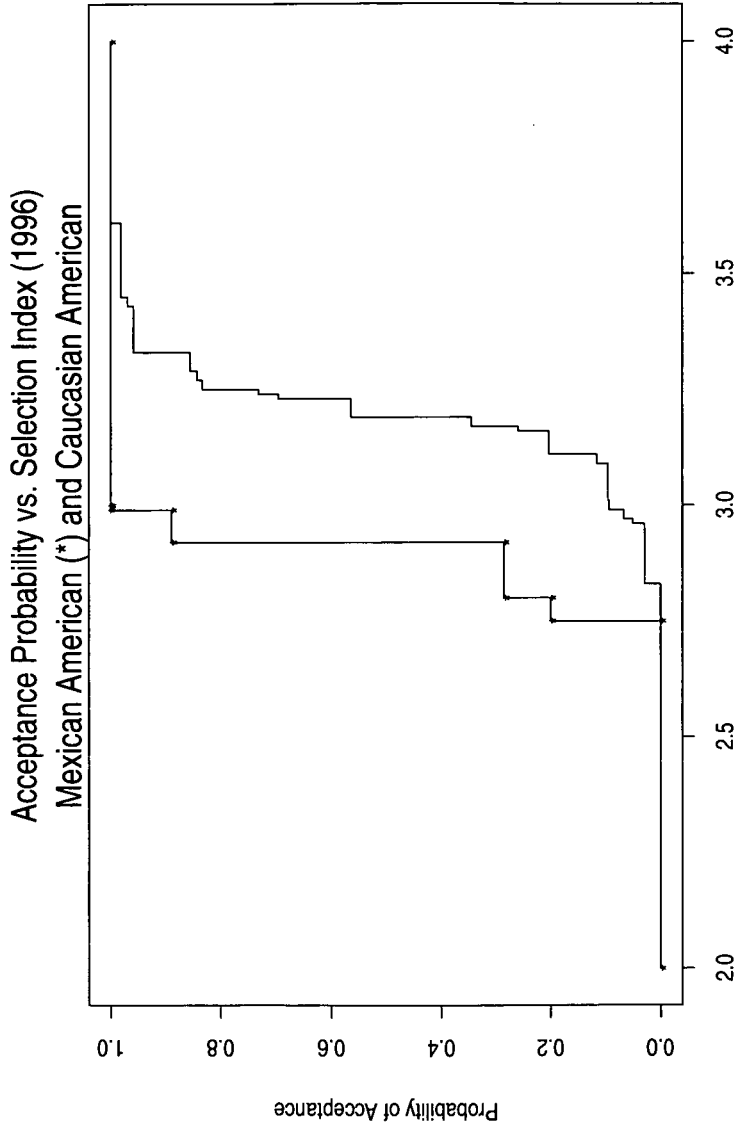
Selection Index
Figure 16



Selection Index
Figure 17

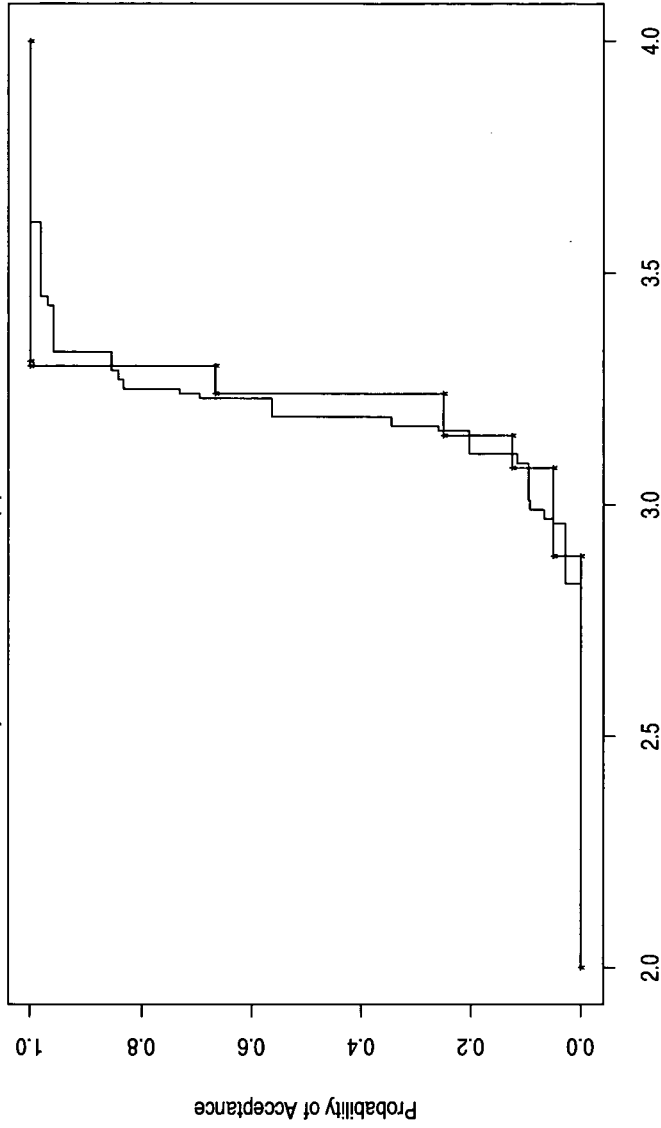


Selection Index
Figure 18

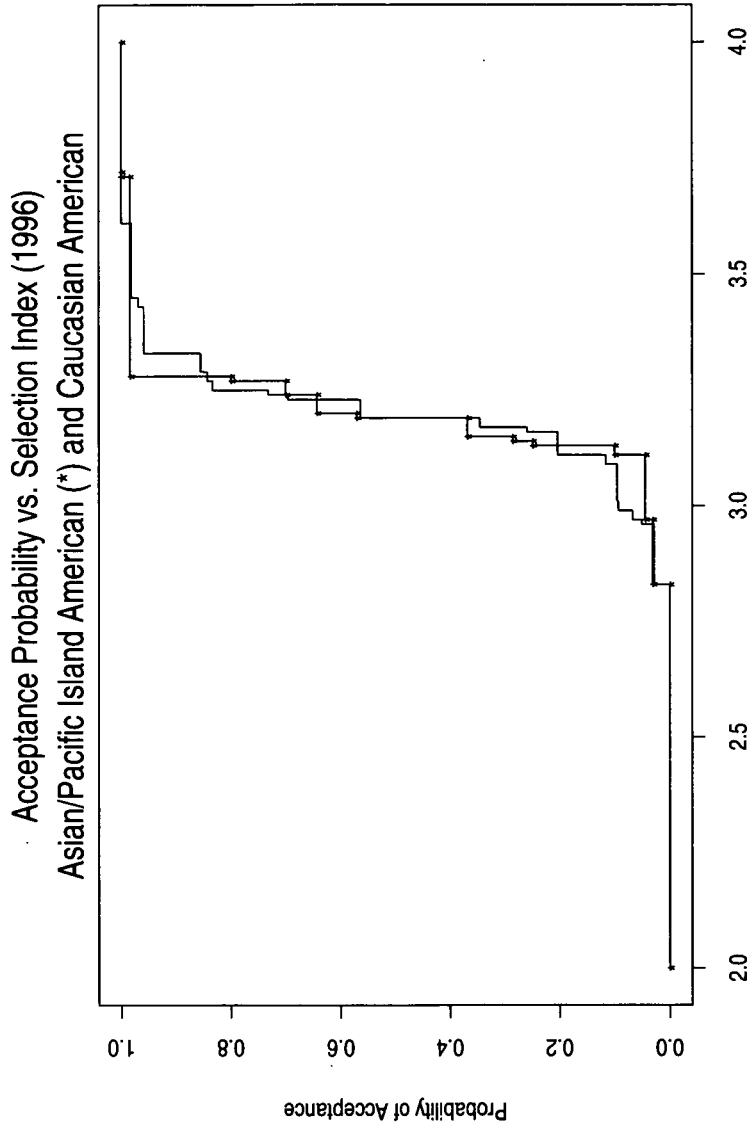


Selection Index
Figure 19

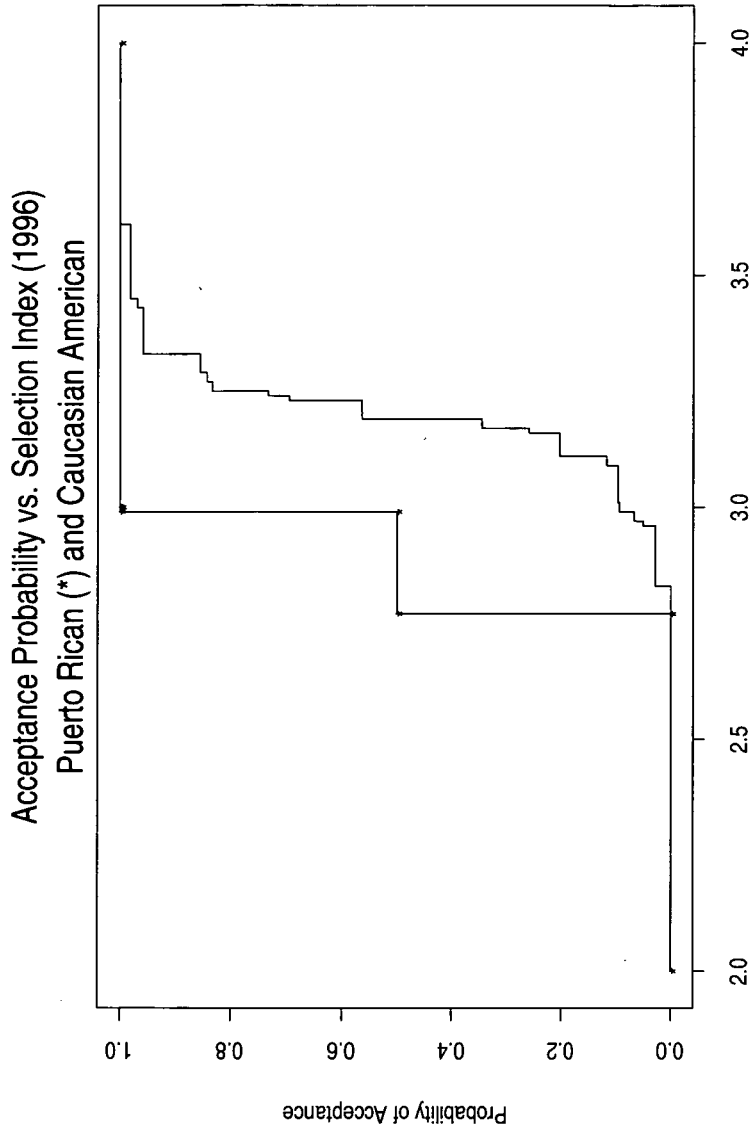
Acceptance Probability vs. Selection Index (1996)
Other Hispanic American (*) and Caucasian American



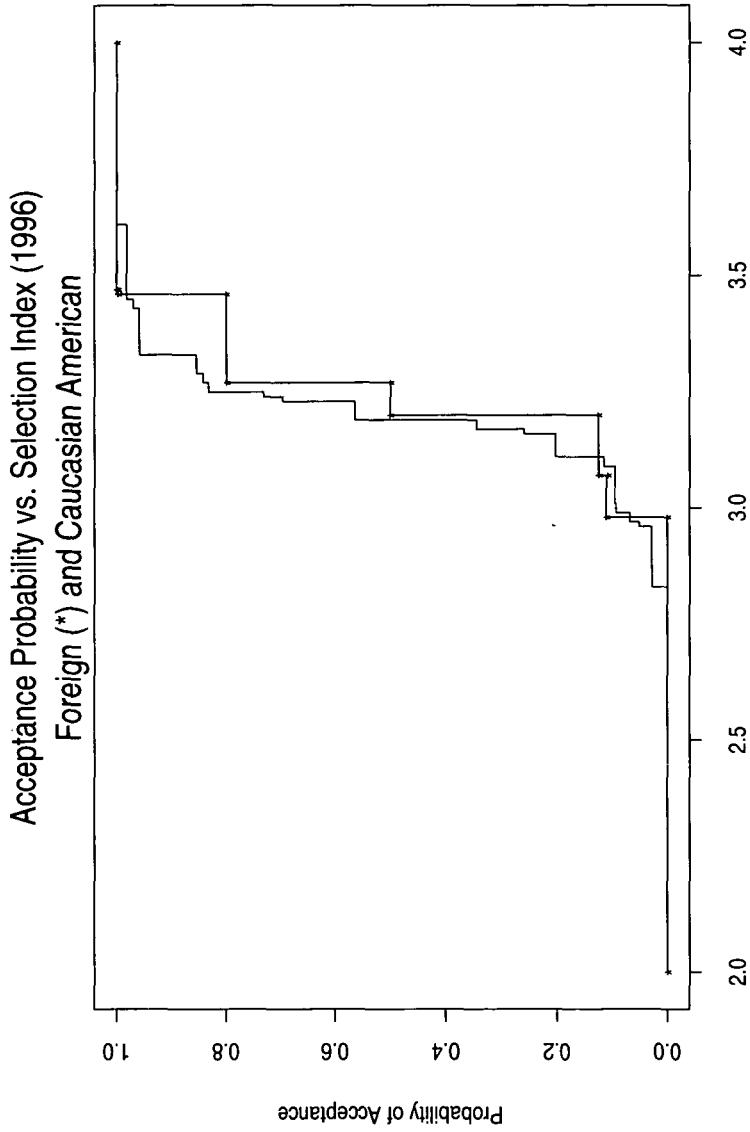
Selection Index
Figure 20



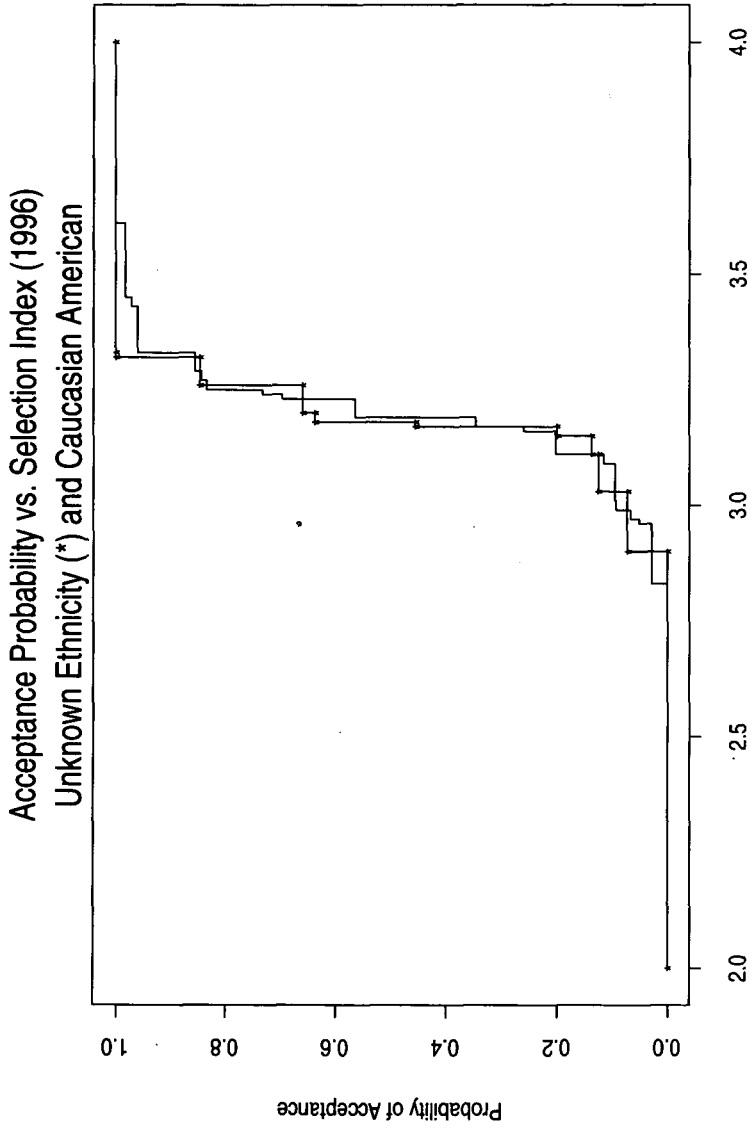
Selection Index
Figure 21



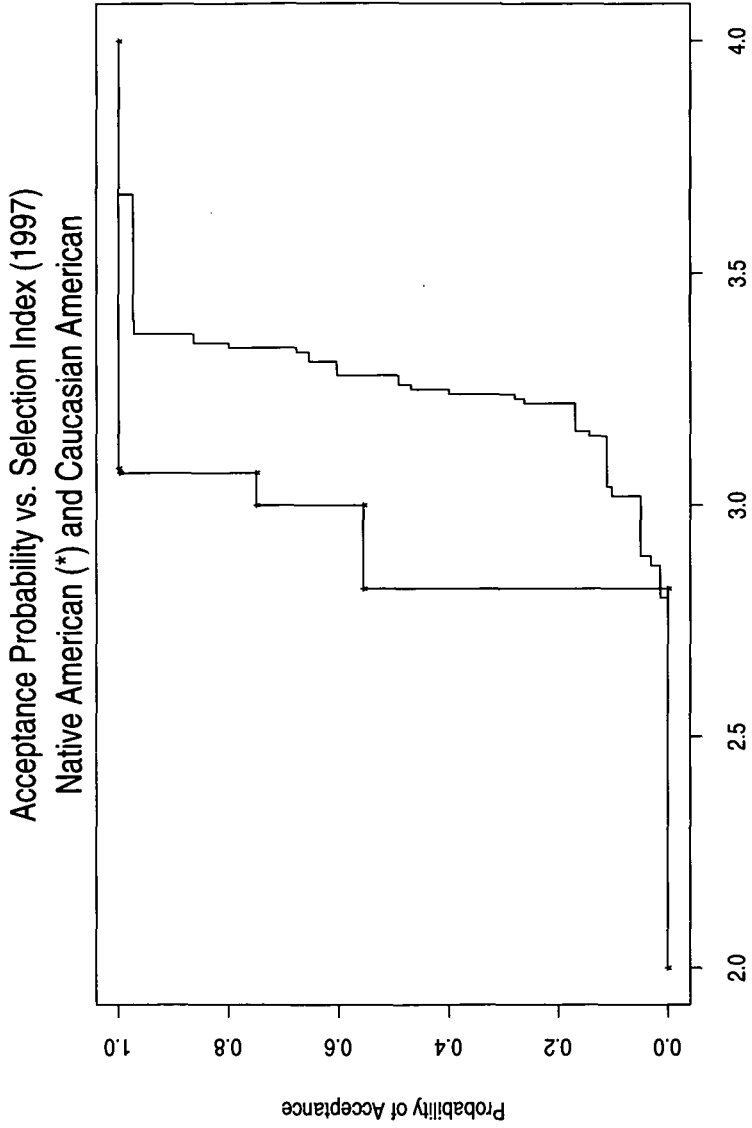
Selection Index
Figure 22



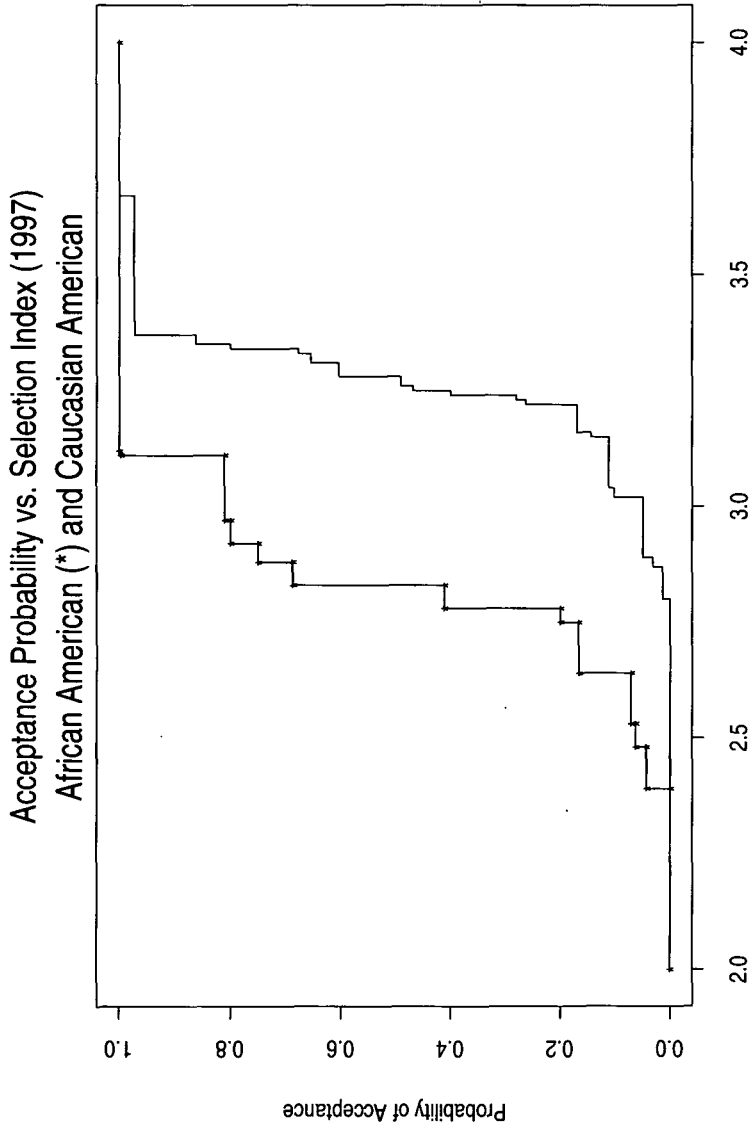
Selection Index
Figure 23



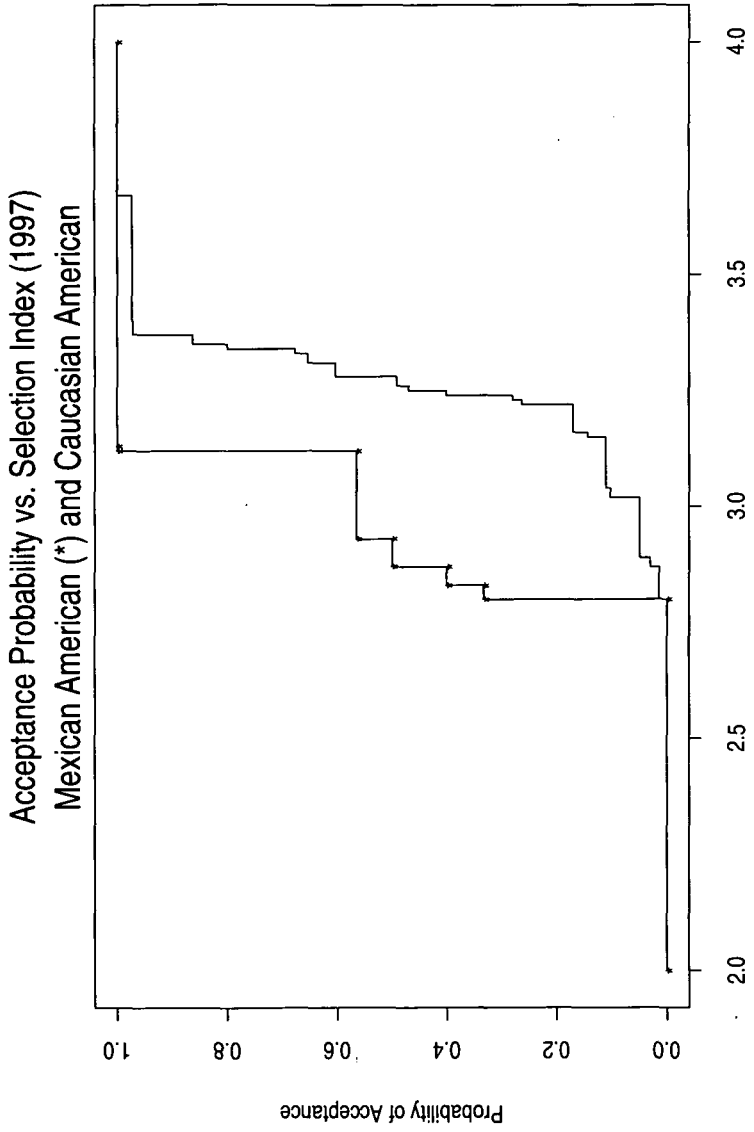
Selection Index
Figure 24



Selection Index
Figure 25

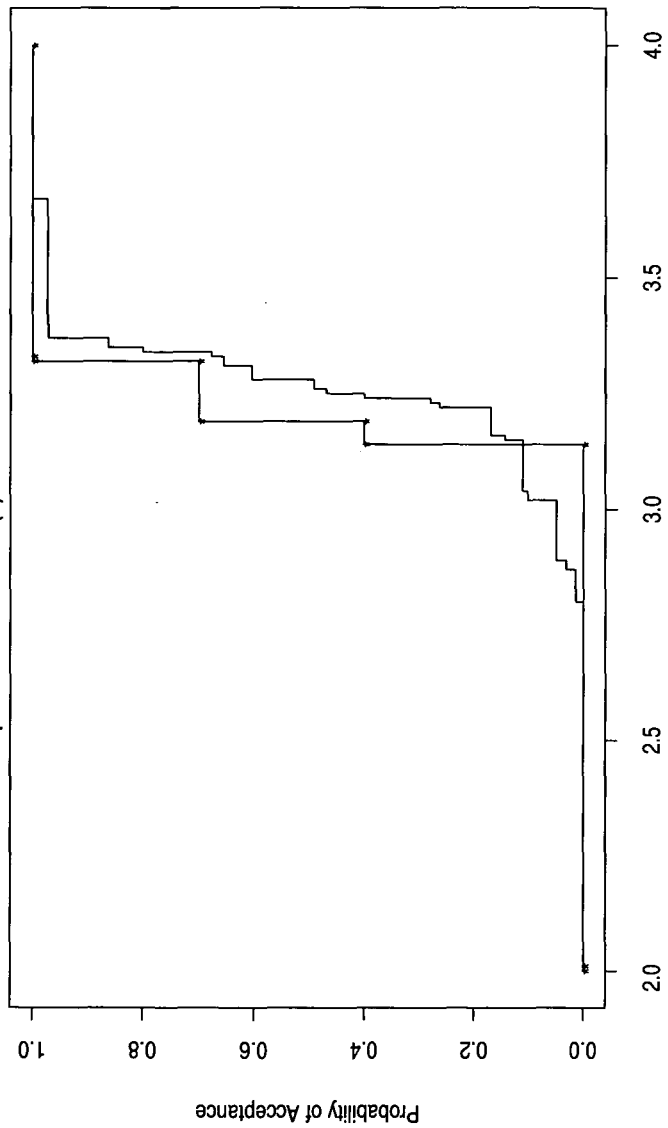


Selection Index
Figure 26

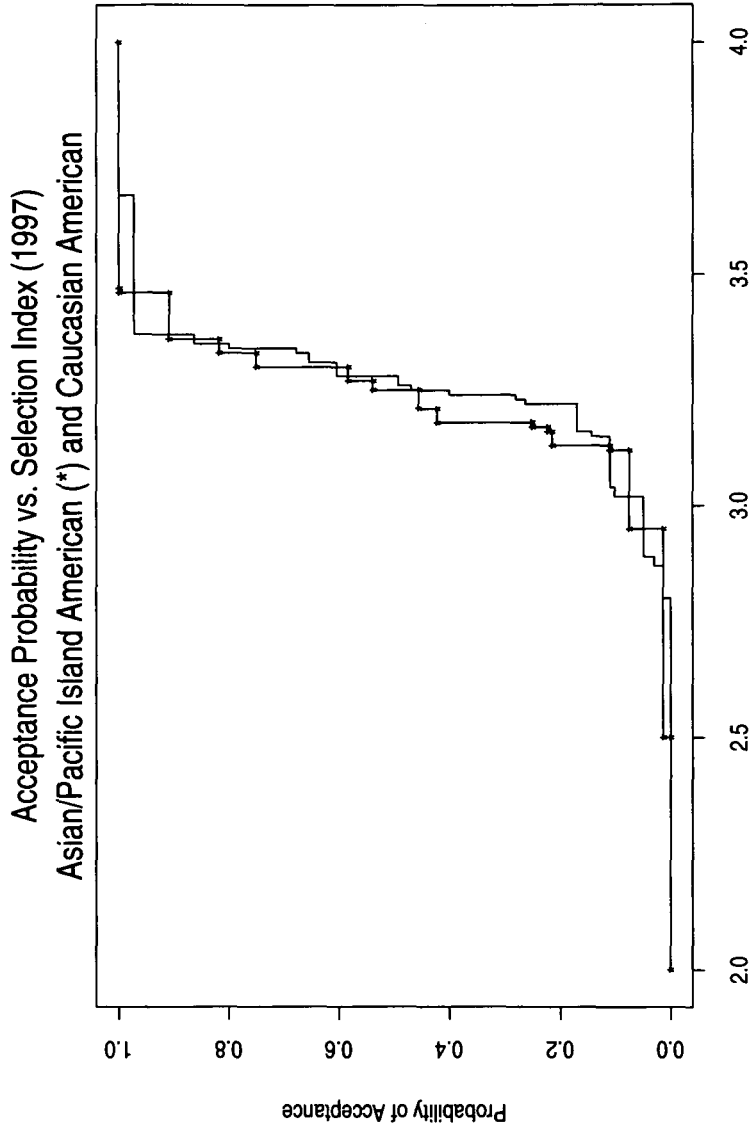


Selection Index
Figure 27

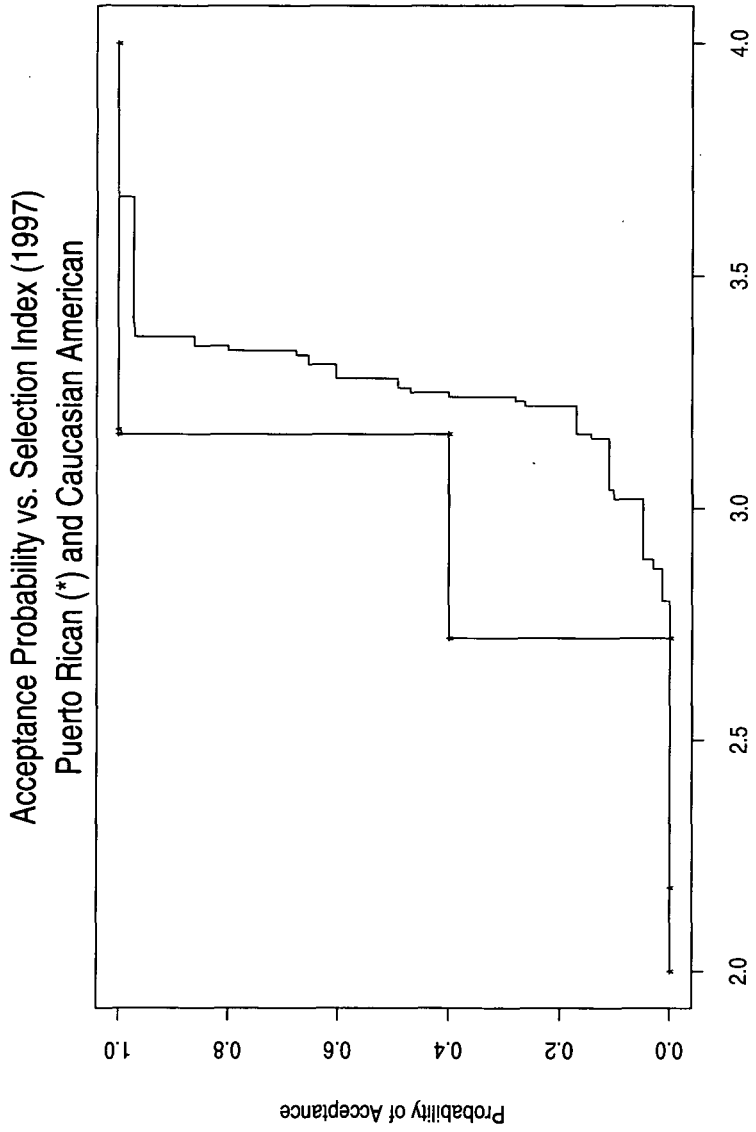
Acceptance Probability vs. Selection Index (1997)
Other Hispanic American (*) and Caucasian American



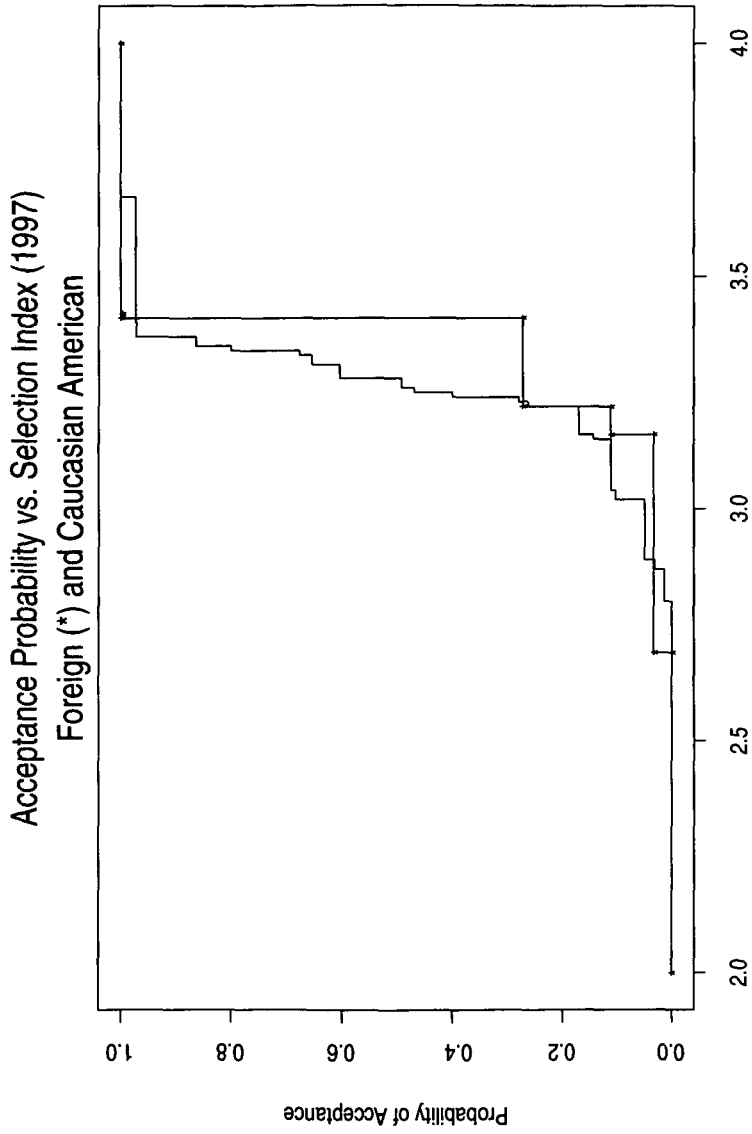
Selection Index
Figure 28



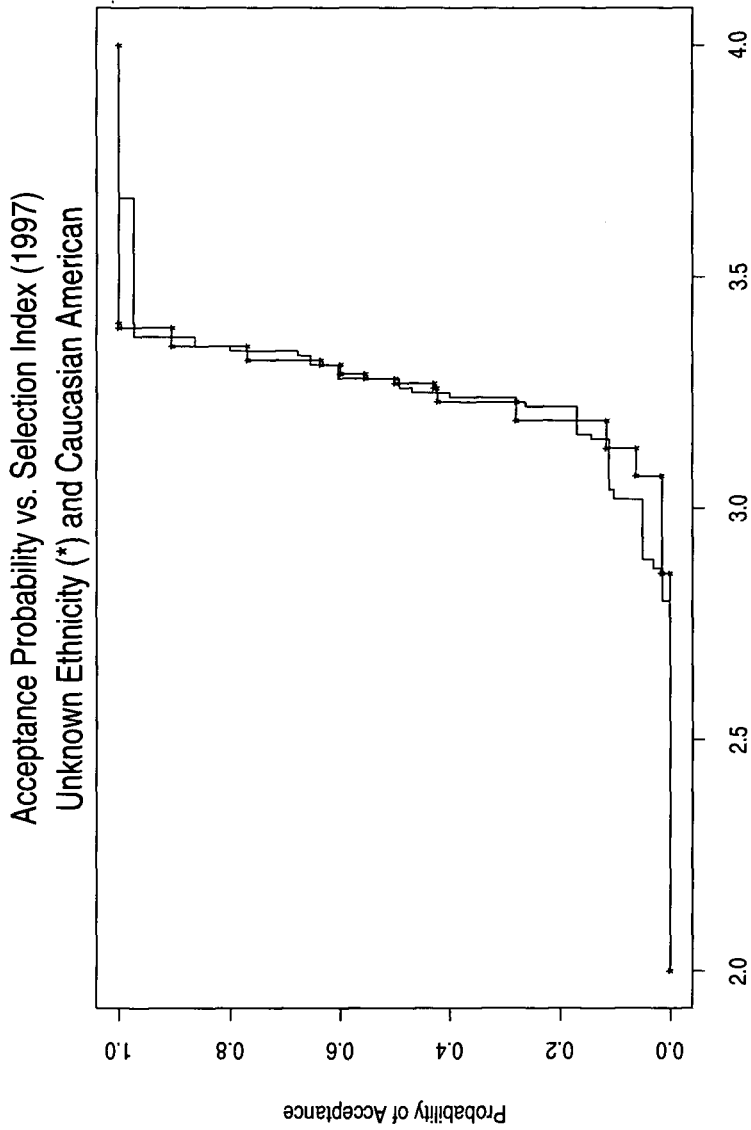
Selection Index
Figure 29



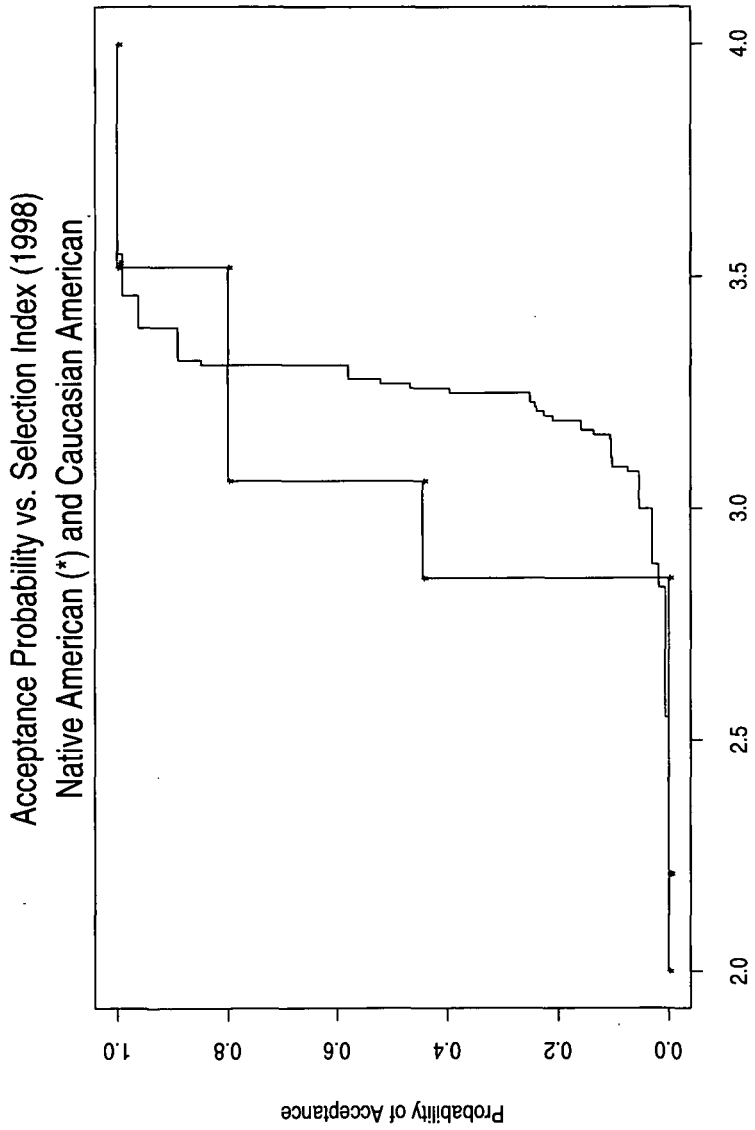
Selection Index
Figure 30



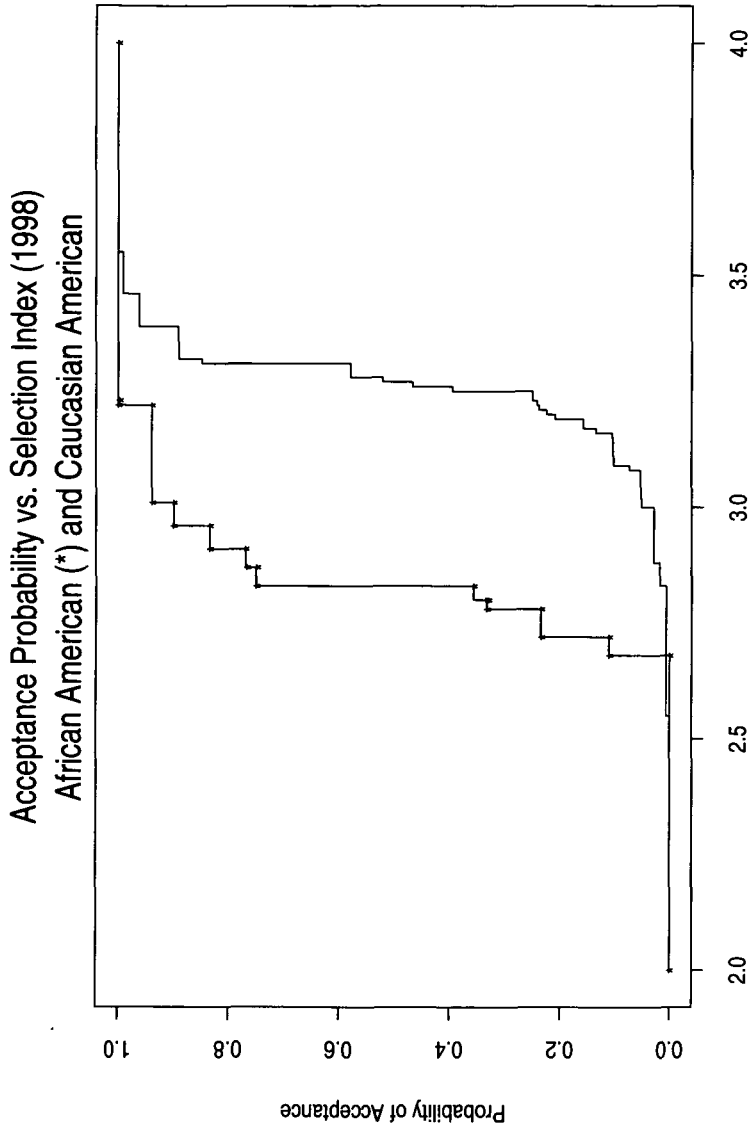
Selection Index
Figure 31



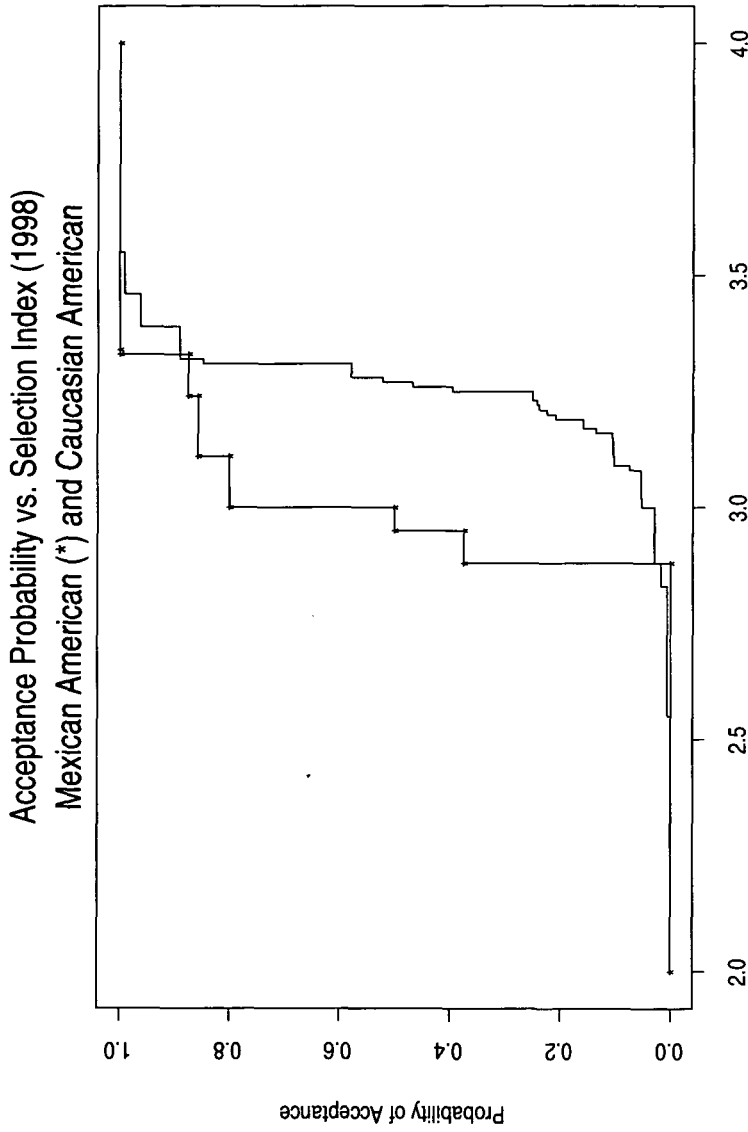
Selection Index
Figure 32



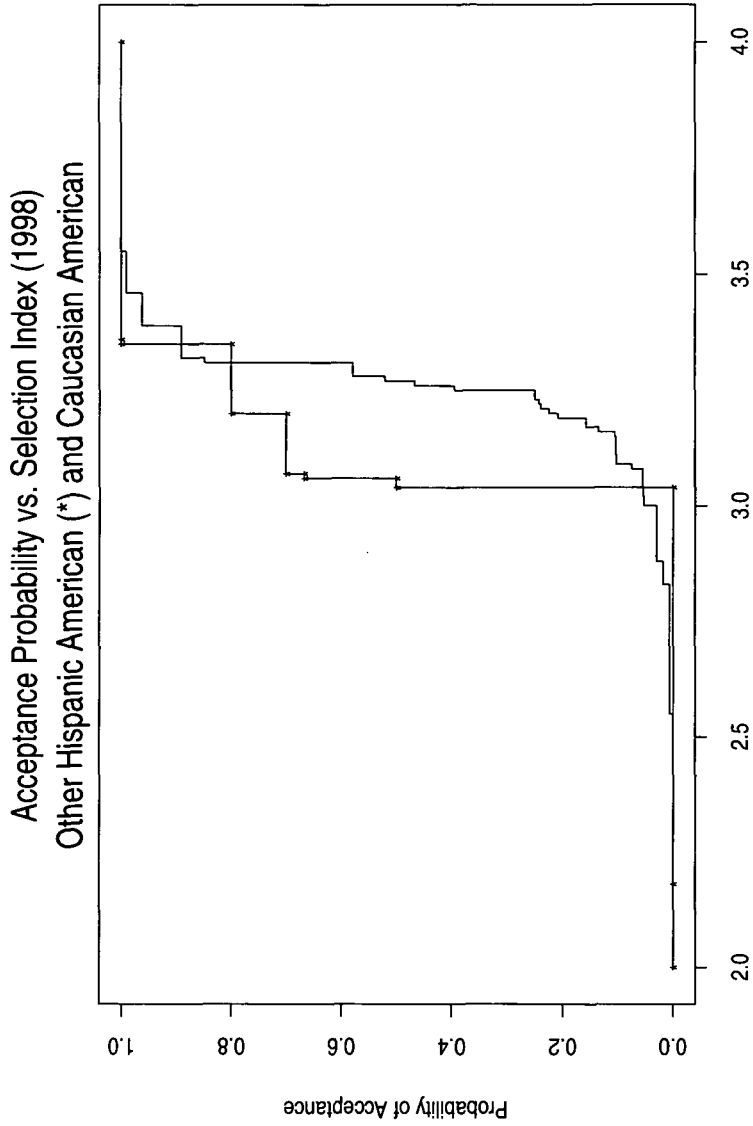
Selection Index
Figure 33



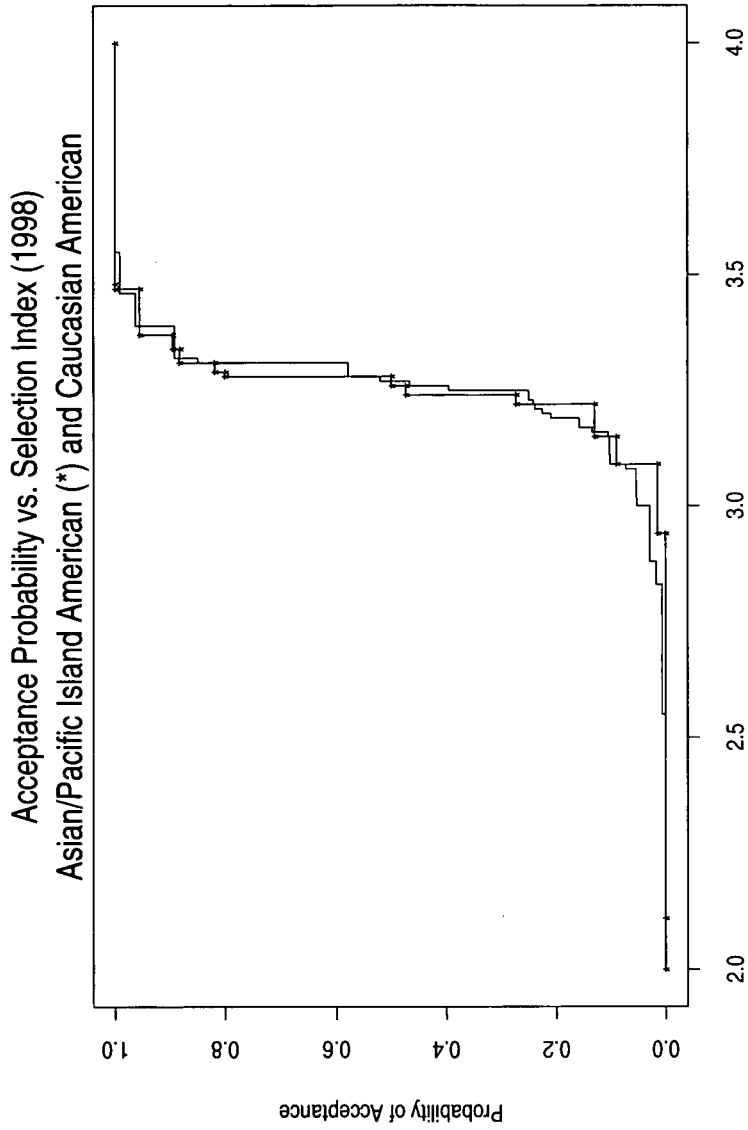
Selection Index
Figure 34



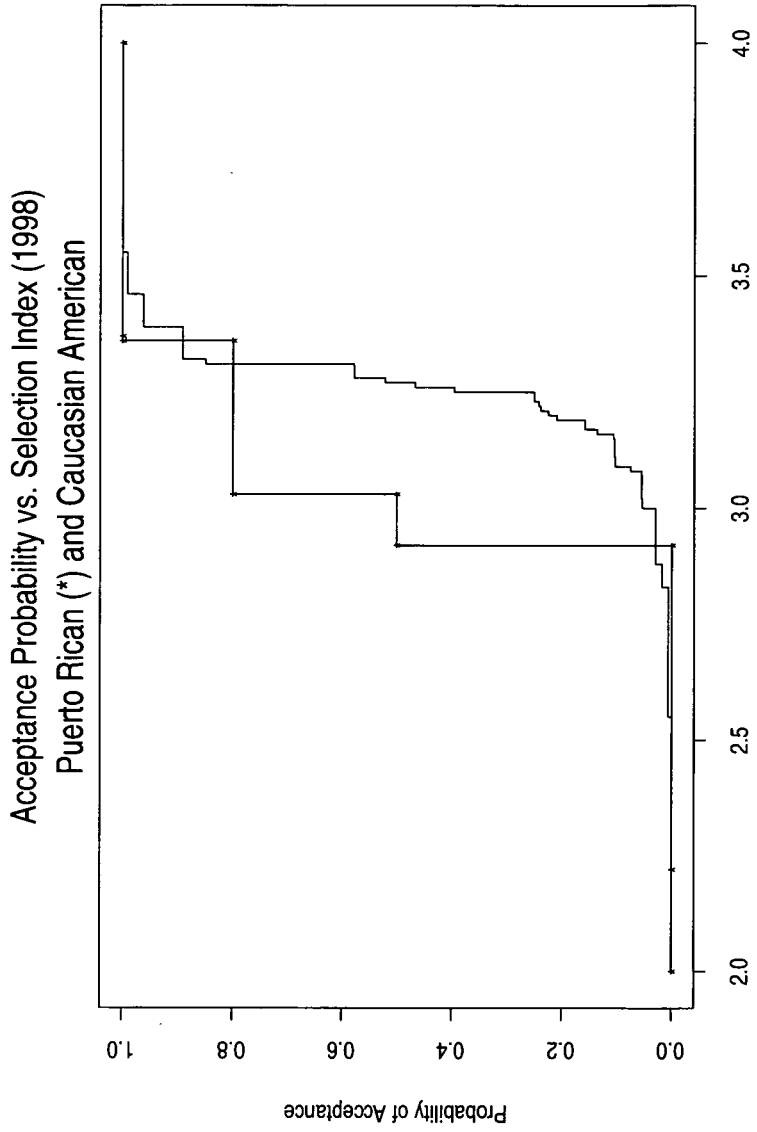
Selection Index
Figure 35



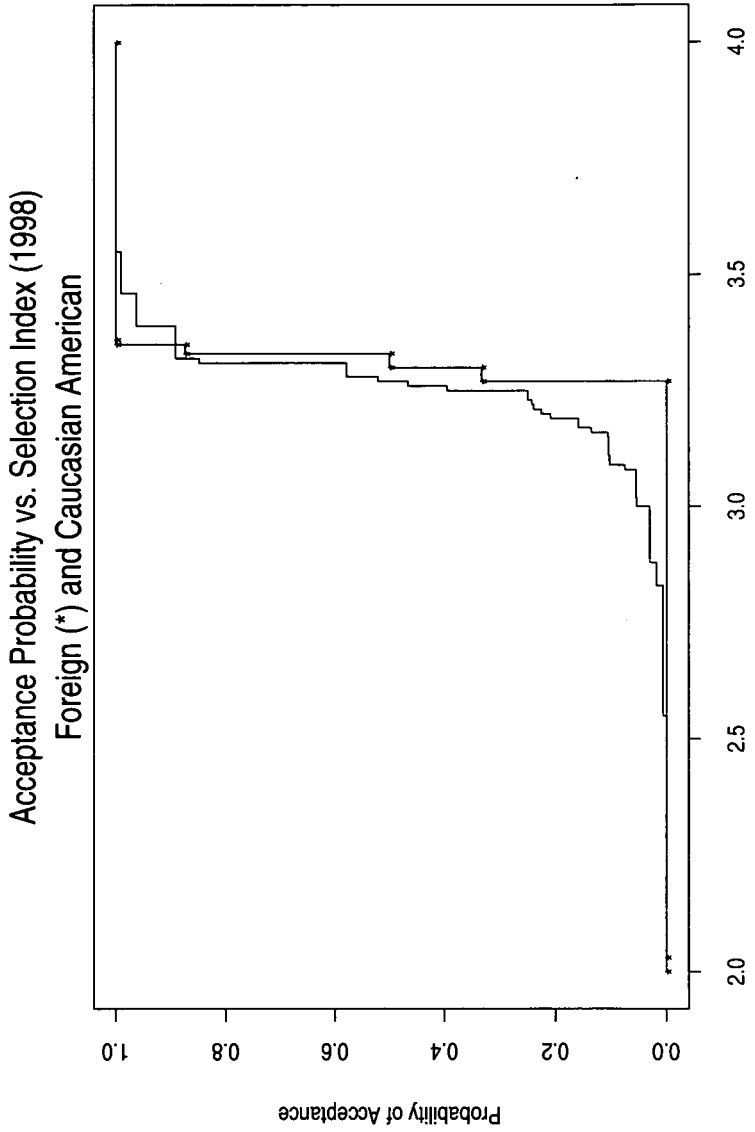
Selection Index
Figure 36



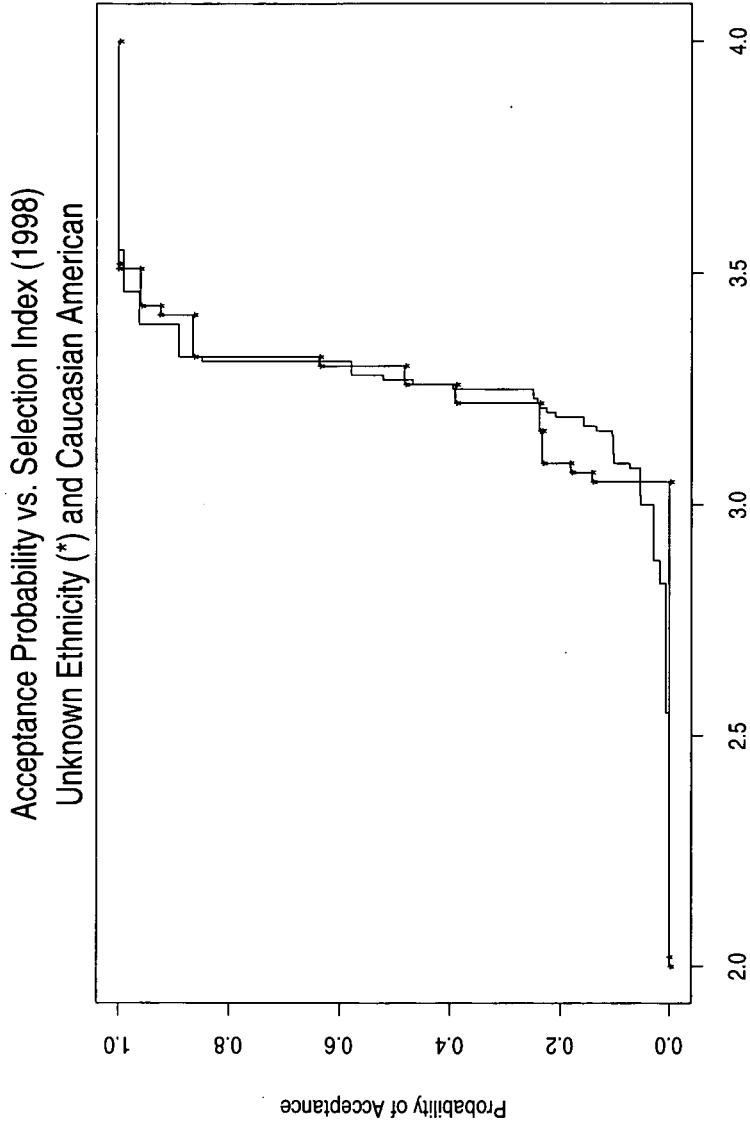
Selection Index
Figure 37



Selection Index
Figure 38



Selection Index
Figure 39



Selection Index
Figure 40

EXHIBIT A

**Admission Grid of LSAT & GPA for All Applicants
1995 Final Grid**

	No Lsat Apps Adm	120-145 Apps Adm	146-147 Apps Adm	148-150 Apps Adm	151-153 Apps Adm	154-155 Apps Adm
3.75 & Above	6 0	6 0	7 0	13 0	27 1	24 2
3.50 - 3.74	12 0	23 0	13 0	35 0	49 5	61 8
3.25 - 3.49	10 3	40 0	9 0	35 3	52 3	55 7
3.00 - 3.24	10 1	47 0	18 0	56 2	49 2	29 2
2.75 - 2.99	6 0	58 0	16 0	31 1	23 0	25 3
2.50 - 2.74	2 0	44 0	8 0	18 1	19 1	7 1
2.25 - 2.49	4 0	30 0	7 0	10 0	6 0	2 0
2.00 - 2.24	0 0	12 0	4 0	3 0	3 0	1 0
Below 2.00	0 0	2 0	2 0	0 0	0 0	0 0
No GPA	34 0	12 0	4 0	7 0	7 0	7 0
Total	84 4	274 0	88 0	208 7	235 12	211 23

156-158	159-160	161-163	164-166	167-169	170-Above	Total
Apps	Apps	Apps	Apps	Apps	Apps	Apps
Adm	Adm	Adm	Adm	Adm	Adm	Adm
68	64	141	151	133	152	792
7	3	16	75	119	144	367
96	110	245	248	182	143	1217
10	13	32	99	138	132	437
93	109	198	144	110	115	970
16	6	17	18	54	87	214
63	38	76	48	40	31	505
8	7	13	6	11	16	68
20	20	34	29	16	13	291
2	3	4	4	2	4	23
10	7	14	10	9	8	156
1	1	2	2	5	0	14
3	3	8	3	3	3	82
0	0	0	0	1	0	1
3	1	0	0	1	1	29
0	0	0	0	0	0	0
0	2	1	0	0	0	7
0	0	0	0	0	0	0
6	1	6	4	7	3	98
1	0	0	1	2	2	6
362	355	723	637	501	469	4147
45	33	84	205	332	385	1130

**Admission Grid of LSAT & GPA for Native Americans
1995 Final Grid**

	No Lsat Apps Adm	120-145 Apps Adm	146-147 Apps Adm	148-150 Apps Adm	151-153 Apps Adm	154-155 Apps Adm
3.75 & Above	0 0	0 0	0 0	0 0	2 1	0 0
3.50 - 3.74	0 0	1 0	0 0	0 0	0 0	1 0
3.25 - 3.49	0 0	0 0	0 0	0 0	0 0	3 1
3.00 - 3.24	2 1	1 0	1 0	0 0	1 0	0 0
2.75 - 2.99	0 0	2 0	0 0	3 0	1 0	0 0
2.50 - 2.74	0 0	0 0	1 0	2 1	0 0	1 0
2.25 - 2.49	1 0	2 0	1 0	0 0	0 0	1 0
2.00 - 2.24	0 0	1 0	0 0	0 0	1 0	0 0
Below 2.00	0 0	0 0	0 0	0 0	0 0	0 0
No GPA	1 0	0 0	0 0	0 0	0 0	0 0
Total	4 1	7 0	3 0	5 1	5 1	6 1

156-158 Apps Adm	159-160 Apps Adm	161-163 Apps Adm	164-166 Apps Adm	167-169 Apps Adm	170-Above Apps Adm	Total Apps Adm
1	0	0	0	0	0	3
0	0	0	0	0	0	1
0	1	2	0	0	0	5
0	0	2	0	0	0	2
1	1	2	1	1	0	9
0	0	2	1	1	0	5
1	0	0	1	1	0	8
1	0	0	1	1	0	4
0	0	0	1	0	0	7
0	0	0	1	0	0	1
0	0	1	0	0	0	5
0	0	0	0	0	0	1
0	0	0	0	0	0	5
0	0	0	0	0	0	0
0	0	0	0	0	0	2
0	0	0	0	0	0	0
0	0	0	0	0	0	0
0	0	0	0	0	0	0
0	0	0	0	0	0	1
0	0	0	0	0	0	0
3	2	5	3	2	0	45
1	0	4	3	2	0	14

**Admission Grid of LSAT & GPA for African Americans
1995 Final Grid**

	No Lsat	120-145	146-147	148-150	151-153	154-155
	Apps	Apps	Apps	Apps	Apps	Apps
	Adm	Adm	Adm	Adm	Adm	Adm
3.75 & Above	0 0	1 0	1 0	1 0	1 0	0 0
3.50 - 3.74	0 0	9 0	3 0	2 0	10 5	5 4
3.25 - 3.49	0 0	15 0	4 0	6 2	7 3	5 4
3.00 - 3.24	0 0	21 0	5 0	26 2	13 2	6 2
2.75 - 2.99	1 0	29 0	7 0	13 1	10 0	9 3
2.50 - 2.74	1 0	18 0	6 0	9 0	7 1	3 1
2.25 - 2.49	0 0	11 0	3 0	6 0	1 0	0 0
2.00 - 2.24	0 0	8 0	2 0	2 0	0 0	0 0
Below 2.00	0 0	2 0	2 0	0 0	0 0	0 0
No GPA	12 0	1 0	0 0	0 0	0 0	0 0
Total	14 0	115 0	33 0	65 5	49 11	28 14

156-158 Apps Adm	159-160 Apps Adm	161-163 Apps Adm	164-166 Apps Adm	167-169 Apps Adm	170-Above Apps Adm	Total Apps Adm
1	2	3	3	0	1	14
1	2	3	3	0	1	10
2	3	6	2	0	1	43
2	3	5	1	0	1	21
10	3	4	1	2	0	57
10	3	4	1	2	0	29
7	5	8	1	0	0	92
4	5	7	1	0	0	23
5	5	4	2	0	0	85
2	1	4	2	0	0	13
2	2	3	1	2	1	55
1	1	2	1	2	0	9
2	3	1	0	1	0	28
0	0	0	0	1	0	1
0	0	0	0	0	0	12
0	0	0	0	0	0	0
0	1	0	0	0	0	5
0	0	0	0	0	0	0
0	0	0	0	0	0	13
0	0	0	0	0	0	0
29	24	29	10	5	3	404
20	15	25	9	5	2	106

**Admission Grid of LSAT & GPA for Caucasian Applicants
1995 Final Grid**

	No Lsat Apps Adm	120-145 Apps Adm	146-147 Apps Adm	148-150 Apps Adm	151-153 Apps Adm	154-155 Apps Adm
3.75 & Above	5 0	2 0	4 0	8 0	11 0	12 0
3.50 - 3.74	6 0	7 0	6 0	19 0	23 0	32 3
3.25 - 3.49	9 3	10 0	1 0	16 0	24 0	21 0
3.00 - 3.24	6 0	8 0	4 0	17 0	13 0	15 0
2.75 - 2.99	4 0	8 0	2 0	7 0	7 0	8 0
2.50 - 2.74	0 0	10 0	0 0	4 0	2 0	3 0
2.25 - 2.49	3 0	8 0	1 0	3 0	1 0	0 0
2.00 - 2.24	0 0	1 0	1 0	1 0	1 0	0 0
Below 2.00	0 0	0 0	0 0	0 0	0 0	0 0
No GPA	10 0	1 0	1 0	0 0	1 0	1 0
Total	43 3	55 0	20 0	75 0	83 0	92 3

156-158	159-160	161-163	164-166	167-169	170-Above	Total
Apps	Apps	Apps	Apps	Apps	Apps	Apps
Adm	Adm	Adm	Adm	Adm	Adm	Adm
47	45	93	108	96	121	552
4	0	8	46	86	114	258
57	65	161	163	130	95	764
2	2	14	62	96	89	268
51	61	126	92	78	74	563
1	1	5	11	38	55	114
26	19	42	37	19	17	223
0	1	2	3	4	8	18
11	7	14	19	11	10	108
0	1	0	0	1	3	5
4	2	7	7	6	6	51
0	0	0	1	3	0	4
1	0	5	2	0	1	25
0	0	0	0	0	0	0
3	1	0	0	1	1	10
0	0	0	0	0	0	0
0	0	1	0	0	0	1
0	0	0	0	0	0	0
1	0	1	0	1	2	19
0	0	0	0	0	1	1
201	200	450	428	342	327	2316
7	5	29	123	228	270	668

**Admission Grid of LSAT & GPA for Mexican Americans
1995 Final Grid**

	No Lsat	120-145	146-147	148-150	151-153	154-155
	Apps	Apps	Apps	Apps	Apps	Apps
	Adm	Adm	Adm	Adm	Adm	Adm
3.75 & Above	0 0	0 0	0 0	1 0	1 0	2 1
3.50 - 3.74	0 0	1 0	1 0	4 0	0 0	2 1
3.25 - 3.49	0 0	3 0	0 0	1 0	0 0	4 2
3.00 - 3.24	0 0	3 0	1 0	1 0	2 0	1 0
2.75 - 2.99	0 0	4 0	2 0	0 0	0 0	2 0
2.50 - 2.74	1 0	4 0	1 0	1 0	3 0	0 0
2.25 - 2.49	0 0	2 0	1 0	0 0	0 0	0 0
2.00 - 2.24	0 0	1 0	0 0	0 0	0 0	0 0
Below 2.00	0 0	0 0	0 0	0 0	0 0	0 0
No GPA	0 0	1 0	0 0	0 0	0 0	0 0
Total	1 0	19 0	6 0	8 0	6 0	11 4

156-158	159-160	161-163	164-166	167-169	170-Above	Total
Apps	Apps	Apps	Apps	Apps	Apps	Apps
Adm	Adm	Adm	Adm	Adm	Adm	Adm
3	1	0	0	1	0	9
2	0	0	0	1	0	4
7	5	6	0	0	0	26
6	4	6	0	0	0	17
5	1	1	1	1	0	17
4	0	1	1	1	0	9
3	2	3	1	1	2	20
2	1	3	1	1	2	10
0	0	0	0	1	0	9
0	0	0	0	1	0	1
0	1	0	0	0	0	11
0	0	0	0	0	0	0
0	0	0	0	1	0	4
0	0	0	0	0	0	0
0	0	0	0	0	0	1
0	0	0	0	0	0	0
0	0	0	0	0	0	0
0	0	0	0	0	0	0
0	0	0	0	0	0	1
0	0	0	0	0	0	0
18	10	10	2	5	2	98
14	5	10	2	4	2	41

**Admission Grid of LSAT & GPA for Other Hispanic Americans
1995 Final Grid**

	No Lsat Apps Adm	120-145 Apps Adm	146-147 Apps Adm	148-150 Apps Adm	151-153 Apps Adm	154-155 Apps Adm
3.75 & Above	0 0	0 0	0 0	0 0	0 0	4 1
3.50 - 3.74	1 0	0 0	2 0	0 0	5 0	1 0
3.25 - 3.49	0 0	2 0	0 0	0 0	4 0	3 0
3.00 - 3.24	2 0	3 0	2 0	2 0	5 0	2 0
2.75 - 2.99	0 0	6 0	0 0	2 0	0 0	0 0
2.50 - 2.74	0 0	0 0	0 0	0 0	3 0	0 0
2.25 - 2.49	0 0	3 0	0 0	1 0	0 0	0 0
2.00 - 2.24	0 0	0 0	0 0	0 0	0 0	0 0
Below 2.00	0 0	0 0	0 0	0 0	0 0	0 0
No GPA	1 0	0 0	0 0	0 0	0 0	0 0
Total	4 0	14 0	4 0	5 0	17 0	10 1

156-158	159-160	161-163	164-166	167-169	170-Above	Total
Apps	Apps	Apps	Apps	Apps	Apps	Apps
Adm	Adm	Adm	Adm	Adm	Adm	Adm
0	1	2	1	4	1	13
0	0	1	1	3	0	6
7	0	3	6	2	1	28
0	0	1	1	0	1	3
2	5	7	2	1	3	29
0	1	1	0	0	3	5
3	2	0	1	1	0	23
0	0	0	0	1	0	1
1	0	1	1	0	1	12
0	0	0	0	0	0	0
0	0	0	1	0	0	4
0	0	0	0	0	0	0
0	0	0	1	0	0	5
0	0	0	0	0	0	0
0	0	0	0	0	0	0
0	0	0	0	0	0	0
0	0	0	0	0	0	0
0	0	0	0	0	0	0
0	0	0	0	0	0	1
0	0	0	0	0	0	0
13	8	13	13	8	6	115
0	1	3	2	4	4	15

**Admission Grid of LSAT & GPA for Asian/Pacific Island Americans
1995 Final Grid**

	No Lsat Apps Adm	120-145 Apps Adm	146-147 Apps Adm	148-150 Apps Adm	151-153 Apps Adm	154-155 Apps Adm
3.75 & Above	0 0	3 0	1 0	1 0	7 0	3 0
3.50 - 3.74	0 0	1 0	0 0	3 0	5 0	6 0
3.25 - 3.49	0 0	2 0	1 0	3 1	7 0	10 0
3.00 - 3.24	0 0	3 0	3 0	5 0	10 0	2 0
2.75 - 2.99	1 0	3 0	4 0	3 0	2 0	4 0
2.50 - 2.74	0 0	4 0	0 0	1 0	2 0	0 0
2.25 - 2.49	0 0	2 0	1 0	0 0	2 0	0 0
2.00 - 2.24	0 0	0 0	0 0	0 0	0 0	0 0
Below 2.00	0 0	0 0	0 0	0 0	0 0	0 0
No GPA	1 0	1 0	0 0	1 0	1 0	1 0
Total	2 0	19 0	10 0	17 1	36 0	26 0

156-158 Apps Adm	159-160 Apps Adm	161-163 Apps Adm	164-166 Apps Adm	167-169 Apps Adm	170-Above Apps Adm	Total Apps Adm
8	8	13	12	9	12	77
0	0	3	8	8	12	31
13	20	31	29	19	17	144
0	1	2	11	17	17	48
14	22	20	15	13	17	124
0	0	2	2	5	16	26
7	4	9	3	6	5	57
0	0	0	0	1	2	3
2	3	10	2	3	2	39
0	1	0	0	0	1	2
1	1	1	0	0	1	11
0	0	0	0	0	0	0
0	0	1	0	1	1	8
0	0	0	0	0	0	0
0	0	0	0	0	0	0
0	1	0	0	0	0	1
0	0	0	0	0	0	0
2	0	1	0	1	0	9
1	0	0	0	0	0	1
47	59	86	61	52	55	470
1	2	7	21	31	48	111

**Admission Grid of LSAT & GPA for Puerto Rican Applicants
1995 Final Grid**

	No Lsat Apps Adm	120-145 Apps Adm	146-147 Apps Adm	148-150 Apps Adm	151-153 Apps Adm	154-155 Apps Adm
3.75 & Above	0 0	0 0	0 0	0 0	0 0	0 0
3.50 - 3.74	0 0	0 0	0 0	1 0	0 0	1 0
3.25 - 3.49	0 0	0 0	0 0	1 0	0 0	0 0
3.00 - 3.24	0 0	2 0	0 0	1 0	0 0	1 0
2.75 - 2.99	0 0	2 0	0 0	0 0	1 0	0 0
2.50 - 2.74	0 0	1 0	0 0	0 0	0 0	0 0
2.25 - 2.49	0 0	0 0	0 0	0 0	0 0	0 0
2.00 - 2.24	0 0	0 0	0 0	0 0	0 0	0 0
Below 2.00	0 0	0 0	0 0	0 0	0 0	0 0
No GPA	0 0	0 0	0 0	0 0	0 0	0 0
Total	0 0	5 0	0 0	3 0	1 0	2 0

156-158	159-160	161-163	164-166	167-169	170-Above	Total
Apps	Apps	Apps	Apps	Apps	Apps	Apps
Adm	Adm	Adm	Adm	Adm	Adm	Adm
0	0	0	0	0	0	0
0	0	0	0	0	0	0
0	1	0	1	0	0	4
0	1	0	1	0	0	2
2	0	0	0	0	0	3
1	0	0	0	0	0	1
3	0	0	0	0	0	7
1	0	0	0	0	0	1
0	0	1	1	0	0	5
0	0	0	1	0	0	1
0	0	0	0	0	0	1
0	0	0	0	0	0	0
0	0	0	0	0	0	0
0	0	0	0	0	0	0
0	0	0	0	0	0	0
0	0	0	0	0	0	0
0	0	0	0	0	0	0
0	0	0	0	0	0	0
0	0	0	0	0	0	0
5	1	1	2	0	0	20
2	1	0	2	0	0	5

**Admission Grid of LSAT & GPA for Foreign Applicants
1995 Final Grid**

	No Lsat Apps Adm	120-145 Apps Adm	146-147 Apps Adm	148-150 Apps Adm	151-153 Apps Adm	154-155 Apps Adm
3.75 & Above	0 0	0 0	0 0	1 0	1 0	1 0
3.50 - 3.74	0 0	1 0	1 0	2 0	2 0	0 0
3.25 - 3.49	0 0	3 0	2 0	2 0	2 0	3 0
3.00 - 3.24	0 0	3 0	1 0	1 0	1 0	0 0
2.75 - 2.99	0 0	2 0	1 0	0 0	2 0	0 0
2.50 - 2.74	0 0	4 0	0 0	0 0	0 0	0 0
2.25 - 2.49	0 0	0 0	0 0	0 0	1 0	0 0
2.00 - 2.24	0 0	0 0	1 0	0 0	0 0	1 0
Below 2.00	0 0	0 0	0 0	0 0	0 0	0 0
No GPA	2 0	6 0	2 0	4 0	1 0	2 0
Total	2 0	19 0	8 0	10 0	10 0	7 0

156-158 Apps Adm	159-160 Apps Adm	161-163 Apps Adm	164-166 Apps Adm	167-169 Apps Adm	170-Above Apps Adm	Total Apps Adm
0	1	4	5	1	2	16
0	1	0	2	0	2	5
2	1	4	4	2	3	22
0	0	0	0	1	2	3
1	1	3	3	1	0	21
0	1	0	0	1	0	2
0	2	1	0	0	0	9
0	0	0	0	0	0	0
0	2	0	0	0	0	7
0	0	0	0	0	0	0
0	0	0	1	0	0	5
0	0	0	0	0	0	0
0	0	0	0	0	1	2
0	0	0	0	0	0	0
0	0	0	0	0	0	2
0	0	0	0	0	0	0
0	0	0	0	0	0	0
0	0	0	0	0	0	0
1	1	3	2	3	1	28
0	0	0	0	1	1	2
4	8	15	15	7	7	112
0	2	0	2	3	5	12

**Admission Grid of LSAT & GPA for Applicants of Unknown Ethnicity
1995 Final Grid**

	No Lsat Apps Adm	120-145 Apps Adm	146-147 Apps Adm	148-150 Apps Adm	151-153 Apps Adm	154-155 Apps Adm
3.75 & Above	1 0	0 0	1 0	1 0	4 0	2 0
3.50 - 3.74	5 0	3 0	0 0	4 0	4 0	13 0
3.25 - 3.49	1 0	5 0	1 0	6 0	8 0	6 0
3.00 - 3.24	0 0	3 0	1 0	3 0	4 0	2 0
2.75 - 2.99	0 0	2 0	0 0	3 0	0 0	2 0
2.50 - 2.74	0 0	3 0	0 0	1 0	2 0	0 0
2.25 - 2.49	0 0	2 0	0 0	0 0	1 0	1 0
2.00 - 2.24	0 0	1 0	0 0	0 0	1 0	0 0
Below 2.00	0 0	0 0	0 0	0 0	0 0	0 0
No GPA	7 0	2 0	1 0	2 0	4 0	3 0
Total	14 0	21 0	4 0	20 0	28 0	29 0

156-158	159-160	161-163	164-166	167-169	170-Above	Total
Apps	Apps	Apps	Apps	Apps	Apps	Apps
Adm	Adm	Adm	Adm	Adm	Adm	Adm
8	6	26	22	22	15	108
0	0	1	15	21	15	52
8	14	32	43	29	26	181
0	2	2	23	24	22	73
7	15	35	29	13	21	147
0	0	2	2	6	13	23
13	4	13	4	12	7	66
0	0	1	0	3	4	8
1	3	4	3	1	0	19
0	0	0	0	0	0	0
3	1	2	0	1	0	13
0	0	0	0	0	0	0
0	0	1	0	0	0	5
0	0	0	0	0	0	0
0	0	0	0	0	0	2
0	0	0	0	0	0	0
0	0	0	0	0	0	0
2	0	1	2	2	0	26
0	0	0	1	1	0	2
42	43	114	103	80	69	567
0	2	6	41	55	54	158

**Admission Grid of LSAT & GPA for Selected Minorities
1995 Final Grid**

	No Lsat Apps Adm	120-145 Apps Adm	146-147 Apps Adm	148-150 Apps Adm	151-153 Apps Adm	154-155 Apps Adm
3.75 & Above	0 0	1 0	1 0	2 0	4 1	2 1
3.50 - 3.74	0 0	11 0	4 0	7 0	10 5	9 5
3.25 - 3.49	0 0	18 0	4 0	8 2	7 3	12 7
3.00 - 3.24	2 1	27 0	7 0	28 2	16 2	8 2
2.75 - 2.99	1 0	37 0	9 0	16 1	12 0	11 3
2.50 - 2.74	2 0	23 0	8 0	12 1	10 1	4 1
2.25 - 2.49	1 0	15 0	5 0	6 0	1 0	1 0
2.00 - 2.24	0 0	10 0	2 0	2 0	1 0	0 0
Below 2.00	0 0	2 0	2 0	0 0	0 0	0 0
No GPA	13 0	2 0	0 0	0 0	0 0	0 0
Total	19 1	146 0	42 0	81 6	61 12	47 19

156-158	159-160	161-163	164-166	167-169	170-Above	Total
Apps	Apps	Apps	Apps	Apps	Apps	Apps
Adm	Adm	Adm	Adm	Adm	Adm	Adm
5	3	3	3	1	1	26
3	2	3	3	1	1	15
9	10	14	3	0	1	78
8	8	13	2	0	1	42
18	5	7	3	4	0	86
15	3	7	3	4	0	44
14	7	11	3	2	2	127
8	6	10	3	2	2	38
5	5	5	4	1	0	106
2	1	4	4	1	0	16
2	3	4	1	2	1	72
1	1	2	1	2	0	10
2	3	1	0	2	0	37
0	0	0	0	1	0	1
0	0	0	0	0	0	15
0	0	0	0	0	0	0
0	1	0	0	0	0	5
0	0	0	0	0	0	0
0	0	0	0	0	0	15
0	0	0	0	0	0	0
55	37	45	17	12	5	567
37	21	39	16	11	4	166

**Admission Grid of LSAT & GPA for Students of Color
1995 Final Grid**

	No Lsat Apps Adm	120-145 Apps Adm	146-147 Apps Adm	148-150 Apps Adm	151-153 Apps Adm	154-155 Apps Adm
3.75 & Above	0 0	4 0	2 0	3 0	11 1	9 2
3.50 - 3.74	1 0	12 0	6 0	10 0	20 5	16 5
3.25 - 3.49	0 0	22 0	5 0	11 3	18 3	25 7
3.00 - 3.24	4 1	33 0	12 0	35 2	31 2	12 2
2.75 - 2.99	2 0	46 0	13 0	21 1	14 0	15 3
2.50 - 2.74	2 0	27 0	8 0	13 1	15 1	4 1
2.25 - 2.49	1 0	20 0	6 0	7 0	3 0	1 0
2.00 - 2.24	0 0	10 0	2 0	2 0	1 0	0 0
Below 2.00	0 0	2 0	2 0	0 0	0 0	0 0
No GPA	15 0	3 0	0 0	1 0	1 0	1 0
Total	25 1	179 0	56 0	103 7	114 12	83 20

156-158	159-160	161-163	164-166	167-169	170-Above	Total
Apps	Apps	Apps	Apps	Apps	Apps	Apps
Adm	Adm	Adm	Adm	Adm	Adm	Adm
13	12	18	16	14	14	116
3	2	7	12	12	13	52
29	30	48	38	21	19	250
8	9	16	14	17	19	93
34	32	34	20	18	20	239
15	4	10	5	9	19	75
24	13	20	7	9	7	207
8	6	10	3	4	4	42
8	8	16	7	4	3	157
2	2	4	4	1	1	18
3	4	5	2	2	2	87
1	1	2	1	2	0	10
2	3	2	1	3	1	50
0	0	0	0	1	0	1
0	0	0	0	0	0	15
0	0	0	0	0	0	0
0	2	0	0	0	0	6
0	0	0	0	0	0	0
2	0	1	0	1	0	25
1	0	0	0	0	0	1
115	104	144	91	72	66	1152
38	24	49	39	46	56	292

**Admission Grid of LSAT & GPA for Majority Applicants
1995 Final Grid**

	No Lsat Apps Adm	120-145 Apps Adm	146-147 Apps Adm	148-150 Apps Adm	151-153 Apps Adm	154-155 Apps Adm
3.75 & Above	6 0	5 0	6 0	11 0	23 0	22 1
3.50 - 3.74	12 0	12 0	9 0	28 0	39 0	52 3
3.25 - 3.49	10 3	22 0	5 0	27 1	45 0	43 0
3.00 - 3.24	8 0	20 0	11 0	28 0	33 0	21 0
2.75 - 2.99	5 0	21 0	7 0	15 0	11 0	14 0
2.50 - 2.74	0 0	21 0	0 0	6 0	9 0	3 0
2.25 - 2.49	3 0	15 0	2 0	4 0	5 0	1 0
2.00 - 2.24	0 0	2 0	2 0	1 0	2 0	1 0
Below 2.00	0 0	0 0	0 0	0 0	0 0	0 0
No GPA	21 0	10 0	4 0	7 0	7 0	7 0
Total	65 3	128 0	46 0	127 1	174 0	164 4

156-158	159-160	161-163	164-166	167-169	170-Above	Total
Apps	Apps	Apps	Apps	Apps	Apps	Apps
Adm	Adm	Adm	Adm	Adm	Adm	Adm
63	61	138	148	132	151	766
4	1	13	72	118	143	352
87	100	231	245	182	142	1139
2	5	19	97	138	131	395
75	104	191	141	106	115	884
1	3	10	15	50	87	170
49	31	65	45	38	29	378
0	1	3	3	9	14	30
15	15	29	25	15	13	185
0	2	0	0	1	4	7
8	4	10	9	7	7	84
0	0	0	1	3	0	4
1	0	7	3	1	3	45
0	0	0	0	0	0	0
3	1	0	0	1	1	14
0	0	0	0	0	0	0
0	1	1	0	0	0	2
0	0	0	0	0	0	0
6	1	6	4	7	3	83
1	0	0	1	2	2	6
307	318	678	620	489	464	3580
8	12	45	189	321	381	964

**Admission Grid of LSAT & GPA for Residents
1995 Final Grid**

	No Lsat Apps Adm	120-145 Apps Adm	146-147 Apps Adm	148-150 Apps Adm	151-153 Apps Adm	154-155 Apps Adm
3.75 & Above	1 0	1 0	1 0	2 0	6 0	6 0
3.50 - 3.74	3 0	9 0	1 0	9 0	11 0	13 1
3.25 - 3.49	0 0	9 0	0 0	11 2	11 2	12 0
3.00 - 3.24	0 0	5 0	2 0	17 1	15 1	7 0
2.75 - 2.99	0 0	11 0	4 0	11 1	8 0	5 2
2.50 - 2.74	0 0	4 0	2 0	5 1	8 1	0 0
2.25 - 2.49	1 0	12 0	0 0	3 0	0 0	0 0
2.00 - 2.24	0 0	1 0	0 0	2 0	1 0	0 0
Below 2.00	0 0	1 0	1 0	0 0	0 0	0 0
No GPA	14 0	1 0	1 0	0 0	0 0	1 0
Total	19 0	54 0	12 0	60 5	60 4	44 3

156-158	159-160	161-163	164-166	167-169	170-Above	Total
Apps	Apps	Apps	Apps	Apps	Apps	Apps
Adm	Adm	Adm	Adm	Adm	Adm	Adm
20	7	24	17	13	20	118
3	1	8	16	13	19	60
14	18	26	29	17	17	167
2	4	9	24	17	15	72
20	17	25	17	5	12	139
1	1	5	6	5	11	33
15	9	15	3	8	4	100
1	1	3	1	5	2	15
3	5	2	6	0	2	57
0	1	0	1	0	1	6
2	1	4	3	3	1	33
0	0	0	2	2	0	6
1	1	3	1	2	0	24
0	0	0	0	0	0	0
2	1	0	0	0	0	7
0	0	0	0	0	0	0
0	0	0	0	0	0	2
0	0	0	0	0	0	0
0	0	0	1	0	0	18
0	0	0	1	0	0	1
77	59	99	77	48	56	665
7	8	25	51	42	48	193

**Admission Grid of LSAT & GPA for Non-Residents
1995 Final Grid**

	No Lsat Apps Adm	120-145 Apps Adm	146-147 Apps Adm	148-150 Apps Adm	151-153 Apps Adm	154-155 Apps Adm
3.75 & Above	5 0	5 0	6 0	11 0	21 1	18 2
3.50 - 3.74	9 0	14 0	12 0	26 0	38 5	48 7
3.25 - 3.49	10 3	31 0	9 0	24 1	41 1	43 7
3.00 - 3.24	10 1	42 0	16 0	39 1	34 1	22 2
2.75 - 2.99	6 0	47 0	12 0	20 0	15 0	20 1
2.50 - 2.74	2 0	40 0	6 0	13 0	11 0	7 1
2.25 - 2.49	3 0	18 0	7 0	7 0	6 0	2 0
2.00 - 2.24	0 0	11 0	4 0	1 0	2 0	1 0
Below 2.00	0 0	1 0	1 0	0 0	0 0	0 0
No GPA	20 0	11 0	3 0	7 0	7 0	6 0
Total	65 4	220 0	76 0	148 2	175 8	167 20

156-158	159-160	161-163	164-166	167-169	170-Above	Total
Apps	Apps	Apps	Apps	Apps	Apps	Apps
Adm	Adm	Adm	Adm	Adm	Adm	Adm
48	57	117	134	120	132	674
4	2	8	59	106	125	307
82	92	219	219	165	126	1050
8	9	23	75	121	117	365
73	92	173	127	105	103	831
15	5	12	12	49	76	181
48	29	61	45	32	27	405
7	6	10	5	6	14	53
17	15	32	23	16	11	234
2	2	4	3	2	3	17
8	6	10	7	6	7	123
1	1	2	0	3	0	8
2	2	5	2	1	3	58
0	0	0	0	1	0	1
1	0	0	0	1	1	22
0	0	0	0	0	0	0
0	2	1	0	0	0	5
0	0	0	0	0	0	0
6	1	6	3	7	3	80
1	0	0	0	2	2	5
285	296	624	560	453	413	3482
38	25	59	154	290	337	937

**Admission Grid of LSAT & GPA for Females
1995 Final Grid**

	No Lsat Apps Adm	120-145 Apps Adm	146-147 Apps Adm	148-150 Apps Adm	151-153 Apps Adm	154-155 Apps Adm
3.75 & Above	0 0	0 0	2 0	6 0	14 0	10 1
3.50 - 3.74	3 0	14 0	5 0	20 0	26 4	35 6
3.25 - 3.49	5 2	18 0	4 0	19 2	29 2	28 3
3.00 - 3.24	3 0	23 0	8 0	28 0	26 1	11 1
2.75 - 2.99	2 0	30 0	9 0	20 1	9 0	11 2
2.50 - 2.74	0 0	15 0	4 0	10 0	6 0	2 1
2.25 - 2.49	1 0	17 0	4 0	0 0	3 0	1 0
2.00 - 2.24	0 0	7 0	3 0	2 0	1 0	0 0
Below 2.00	0 0	1 0	0 0	0 0	0 0	0 0
No GPA	9 0	6 0	0 0	2 0	2 0	3 0
Total	23 2	131 0	39 0	107 3	116 7	101 14

156-158	159-160	161-163	164-166	167-169	170-Above	Total
Apps	Apps	Apps	Apps	Apps	Apps	Apps
Adm	Adm	Adm	Adm	Adm	Adm	Adm
37	26	60	68	48	50	321
3	2	7	43	45	49	150
45	42	115	100	61	39	505
5	4	20	45	54	34	172
45	48	97	46	34	36	409
8	3	11	6	22	34	93
20	15	29	11	5	8	187
3	2	7	1	1	5	21
8	12	11	5	6	1	124
1	2	2	0	2	0	10
4	2	5	4	2	1	55
0	0	1	2	1	0	5
1	0	2	1	1	0	31
0	0	0	0	0	0	0
0	0	0	0	0	0	13
0	0	0	0	0	0	0
0	0	0	0	0	0	1
0	0	0	0	0	0	0
2	0	0	0	3	1	28
1	0	0	0	1	1	3
162	145	319	235	160	136	1674
21	13	48	97	126	123	454

**Admission Grid of LSAT & GPA for Males
1995 Final Grid**

	No Lsat Apps Adm	120-145 Apps Adm	146-147 Apps Adm	148-150 Apps Adm	151-153 Apps Adm	154-155 Apps Adm
3.75 & Above	6 0	6 0	5 0	7 0	13 1	14 1
3.50 - 3.74	9 0	9 0	8 0	15 0	23 1	26 2
3.25 - 3.49	5 1	22 0	5 0	16 1	23 1	27 4
3.00 - 3.24	7 1	24 0	10 0	28 2	23 1	18 1
2.75 - 2.99	4 0	28 0	7 0	11 0	14 0	14 1
2.50 - 2.74	2 0	29 0	4 0	8 1	13 1	5 0
2.25 - 2.49	3 0	13 0	3 0	10 0	3 0	1 0
2.00 - 2.24	0 0	5 0	1 0	1 0	2 0	1 0
Below 2.00	0 0	1 0	2 0	0 0	0 0	0 0
No GPA	25 0	6 0	4 0	5 0	5 0	4 0
Total	61 2	143 0	49 0	101 4	119 5	110 9

156-158	159-160	161-163	164-166	167-169	170-Above	Total
Apps	Apps	Apps	Apps	Apps	Apps	Apps
Adm	Adm	Adm	Adm	Adm	Adm	Adm
31	38	81	83	85	102	471
4	1	9	32	74	95	217
51	68	130	148	121	104	712
5	9	12	54	84	98	265
48	61	101	98	76	79	561
8	3	6	12	32	53	121
43	23	47	37	35	23	318
5	5	6	5	10	11	47
12	8	23	24	10	12	167
1	1	2	4	0	4	13
6	5	9	6	7	7	101
1	1	1	0	4	0	9
2	3	6	2	2	3	51
0	0	0	0	1	0	1
3	1	0	0	1	1	16
0	0	0	0	0	0	0
0	2	1	0	0	0	6
0	0	0	0	0	0	0
4	1	6	4	4	2	70
0	0	0	1	1	1	3
200	210	404	402	341	333	2473
24	20	36	108	206	262	676